

EST 1945

NOVELTIES COLLECTION  
CYCLE

MAURICE KAIN

DESIGNED IN NEW ZEALAND & AUSTRALIA  
MADE ACROSS THE GLOBE

mk  
Maurice Kain

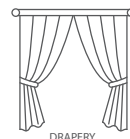




Maurice Kain

# COBBLER

PRINTED COTTON DRAPERY FABRIC



|                          |              |                                |        |
|--------------------------|--------------|--------------------------------|--------|
| <b>COLLECTION NAME</b>   | Novelties    | <b>PATTERN REPEAT</b>          | 63.5cm |
| <b>DESIGN NAME</b>       | Cycle        | <b>CONTINUOUS</b>              | /      |
| <b>BRAND</b>             | Maurice Kain | <b>ADDITIONAL FINISHING</b>    | /      |
| <b>NUMBER OF COLOURS</b> | 2            | <b>WEIGHT (GSM)</b>            | 220gsm |
| <b>FABRIC TYPE</b>       | Kids         | <b>ROLL SIZE</b>               | 40m    |
| <b>USAGE</b>             | Curtains     | <b>COLOURFASTNESS TO LIGHT</b> | 6      |
| <b>COMPOSITION</b>       | 100% Cotton  | <b>FLAMMABILITY</b>            | N      |
| <b>WIDTH</b>             | 140cm        | <b>ABRASION</b>                | N/A    |

## CARE INSTRUCTIONS

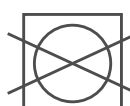
Regular care will minimize need for additional cleaning. Gently vacuum with appropriate attachment. Always exercise caution when spot cleaning. Test clean on non-exposed surface. Remove hooks rings and trims before cleaning. Do not soak, rub or wring. Drip dry in shade. Possible shrinkage 3%



warm hand wash



warm iron



do not tumble dry

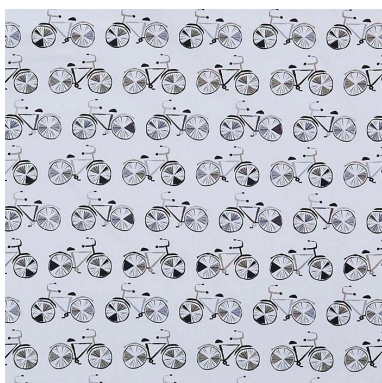


do not bleach

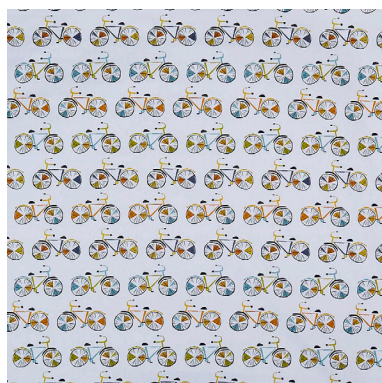


dryclean P50

## AVAILABLE COLOURS



GRAPHITE



MARMALADE



basfordbrands