

EST 1945

SCANDI COLLECTION
COPENHAGEN

MAURICE KAIN

DESIGNED IN NEW ZEALAND & AUSTRALIA
MADE ACROSS THE GLOBE


Maurice Kain

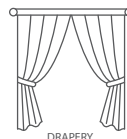


Maurice Kain

COPENHAGEN

PRINTED COTTON DRAPERY FABRIC

Co-ordinates with Helsinki, Oslo & Stockholm
as part of the SCANDI Collection



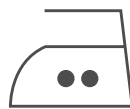
COLLECTION NAME	Scandi	PATTERN REPEAT	15.5cm
DESIGN NAME	Copenhagen	CONTINUOUS	/
BRAND	Maurice Kain	ADDITIONAL FINISHING	/
NUMBER OF COLOURS	5	WEIGHT (GSM)	227gsm
FABRIC TYPE	Geometric	ROLL SIZE	40m
USAGE	Curtains	COLOURFASTNESS TO LIGHT	5-6
COMPOSITION	100% Cotton	FLAMMABILITY	N
WIDTH	140cm	ABRASION	N/A

CARE INSTRUCTIONS

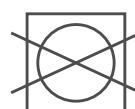
Regular care will minimize need for additional cleaning.
Gently vacuum with appropriate attachment. Always
exercise caution when spot cleaning. Test clean on non-
exposed surface. Remove hooks rings and trims before
cleaning. Do not soak, rub or wring. Drip dry in shade.
Possible shrinkage 3%



warm hand wash



warm iron



do not tumble dry



do not bleach

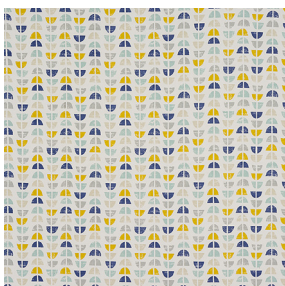


dryclean P50

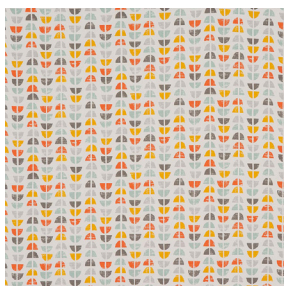
AVAILABLE COLOURS



PEBBLE



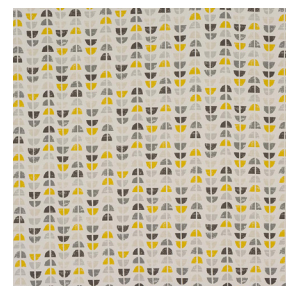
SEAFOAM



SHERBET



SKY BLUE



SUNSHINE



basfordbrands