

SB-SOUTHPORT

RE-ESTABLISHED 2014

FOUR FAMILIES

blind fabric craftsmanship



DESIGNED IN NEW ZEALAND & AUSTRALIA
MADE ACROSS THE GLOBE





SB-SOUTHPORT

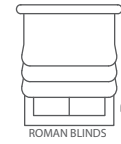
SHEER BLIND FABRIC

colour matches to Maurice Kain Southport

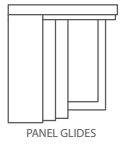
sheer curtain fabric



ROLLER BLINDS



ROMAN BLINDS



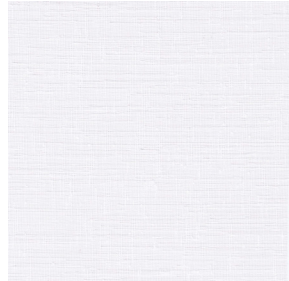
PANEL GLIDES

COLLECTION NAME	SB - SOUTHPORT	PATTERN REPEAT	Nil
DESIGN NAME	SB - SOUTHPORT	CONTINUOUS	N
BRAND	FOUR FAMILIES	ADDITIONAL FINISHING	acrylic stiffening
NUMBER OF COLOURS	20	WEIGHT (GSM)	100gsm
FABRIC TYPE	SHEER	ROLL SIZE	25-30m
USAGE	BLIND FABRIC	COLOURFASTNESS TO LIGHT	6
COMPOSITION	100% POLYESTER	FLAMMABILITY	AS/NZS 1530.2 & 1530.3
WIDTH	327cm	ABRASION	N/A

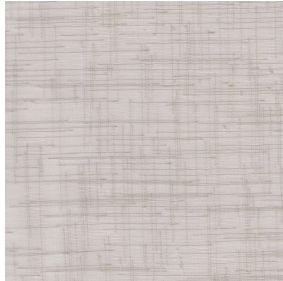
CARE INSTRUCTIONS

Cleaning your blind fabric is essential, not only to remove surface dust and stains, but it will also increase the longevity of your blinds. Use a feather duster, or a vacuum set on low with an appropriate attachment. Always exercise caution when spot cleaning. Use a clean, lint-free cloth or sponge and dip it in warm water. Dry gently with a clean towel. Always make sure to test any cleaning product on a small, discreet section of the fabric. Chemicals will permanently damage your fabric.

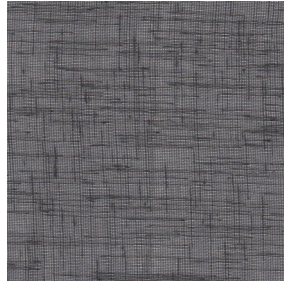
AVAILABLE COLOURS



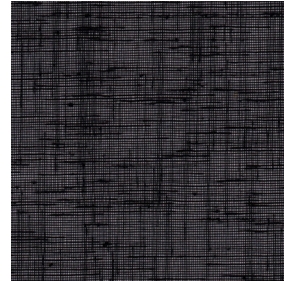
ARCTIC



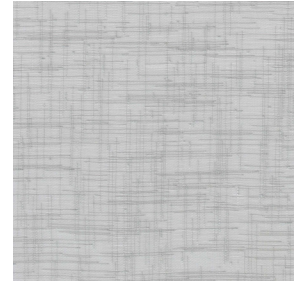
ASH



BALTIC SEA



BLACKJACK



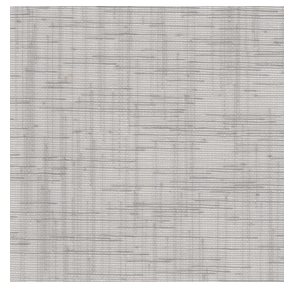
BOUNTY



CREAM



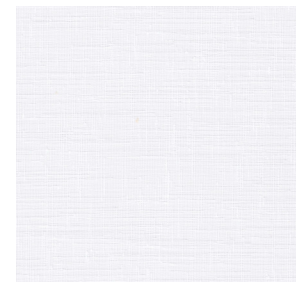
CUMULUS



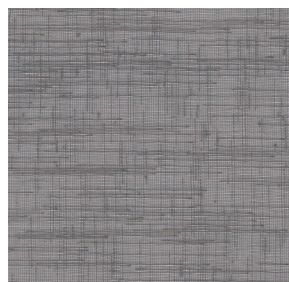
DUSK



FOG



ICE



IRON



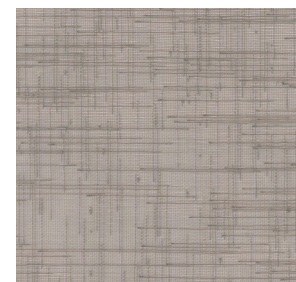
LINEN



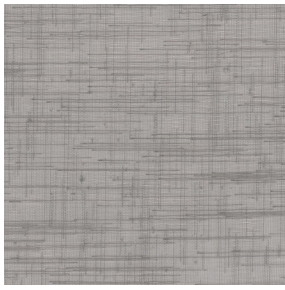
MERINO



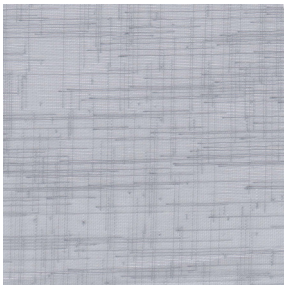
PORCELAIN



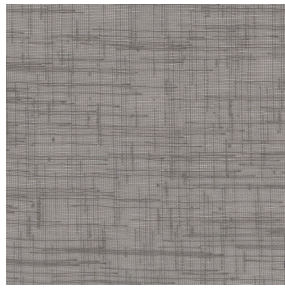
PUTTY



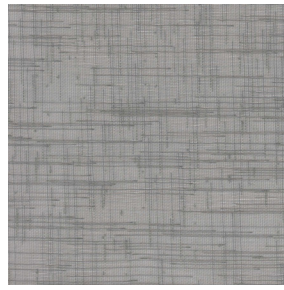
SEAL



SPRAY



STONE



STORM



TEA