

SB-WOOLAMAI

RE-ESTABLISHED 2014

FOUR FAMILIES

blind fabric craftsmanship



DESIGNED IN NEW ZEALAND & AUSTRALIA
MADE ACROSS THE GLOBE

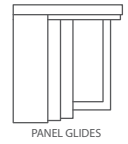
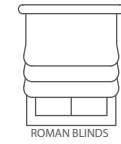


RECYCLED CONTENT



SB-WOOLAMAI

RECYCLED POLYESTER
 SHEER BLIND FABRIC

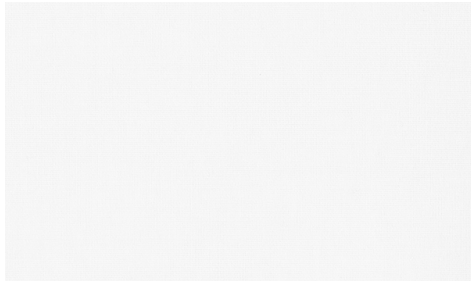


SB-Woolamai	PATTERN REPEAT	Nil
SB-Woolamai	CONTINUOUS	N
Four Families	ADDITIONAL FINISHING	acrylic stiffening
8	WEIGHT (GSM)	100gsm
sheer	ROLL SIZE	20-25m
Blind Fabric	COLOURFASTNESS TO LIGHT	6
60% recycled polyester	FLAMMABILITY	AS/NZS 1530.2 & 1530.3
300cm	ABRASION	N/A

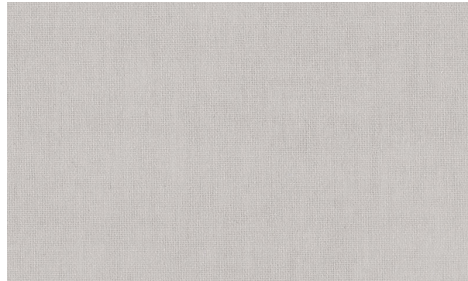
CARE INSTRUCTIONS

Cleaning your blind fabric is essential, not only to remove surface dust and stains, but it will also increase the longevity of your blinds. Use a feather duster, or a vacuum set on low with an appropriate attachment. Always exercise caution when spot cleaning. Use a clean, lint-free cloth or sponge and dip it in warm water. Dry gently with a clean towel. Always make sure to test any cleaning product on a small, discreet section of the fabric. Chemicals will permanently damage your fabric.

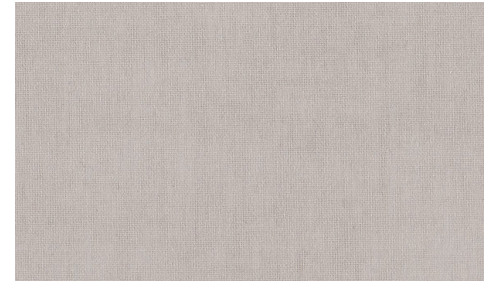
AVAILABLE COLOURS



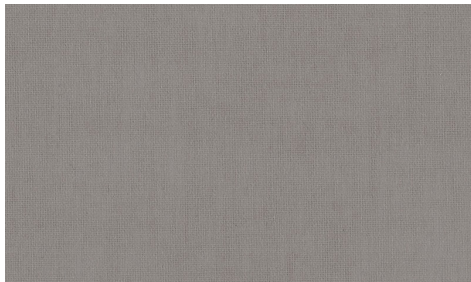
CLOUD



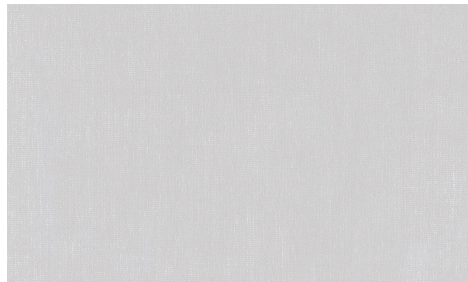
SAND



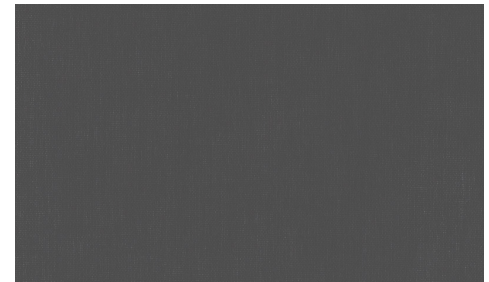
DRIFTWOOD



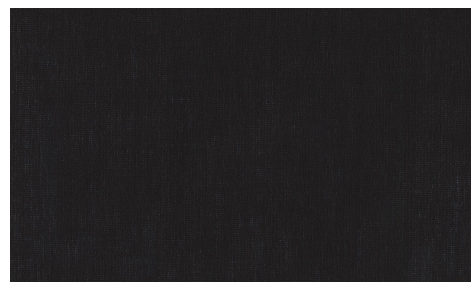
STONE



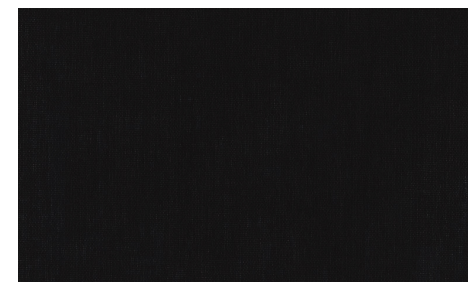
SILVER



STORM



BASALT



ONYX