

Ready Made Curtain & Blinds

2023



filigree

COMPLETE LIVING

basfordbrands

PRODUCT INDEX

SHEER CURTAINS

- 06 Mykonos
- 07 Santorini
- 08 Monte Carlo
- 09 Monaco

BLOCKOUT CURTAINS

- 12 Harris Eyelet | Pencil
- 14 Haven Eyelet | Pencil
- 16 Langton Eyelet | Pencil

ROOM DARKENING CURTAINS

- 19 Umbra
- 20 Cato Eyelet | Pencil

BLINDS

- 23 Pacific
- 24 Atria
- 25 Visio

ACCESSORIES

- 28 Basic Rod Set
- 29 Extendable Rod Set

PRODUCT INFORMATION

- 30 Curtain Sizing Guide
- 32 Blind Sizing Guide

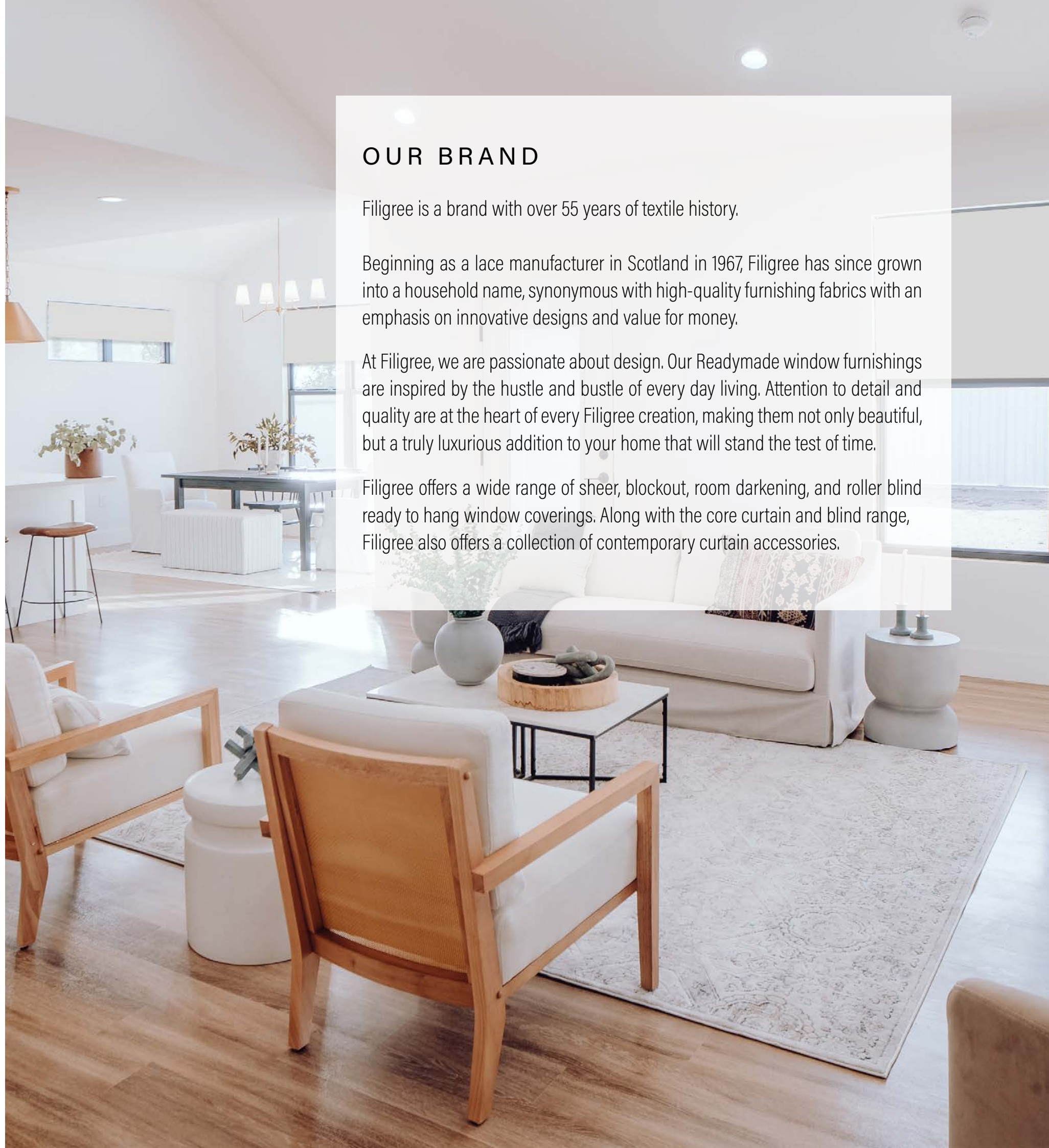
OUR BRAND

Filigree is a brand with over 55 years of textile history.

Beginning as a lace manufacturer in Scotland in 1967, Filigree has since grown into a household name, synonymous with high-quality furnishing fabrics with an emphasis on innovative designs and value for money.

At Filigree, we are passionate about design. Our Readymade window furnishings are inspired by the hustle and bustle of every day living. Attention to detail and quality are at the heart of every Filigree creation, making them not only beautiful, but a truly luxurious addition to your home that will stand the test of time.

Filigree offers a wide range of sheer, blackout, room darkening, and roller blind ready to hang window coverings. Along with the core curtain and blind range, Filigree also offers a collection of contemporary curtain accessories.

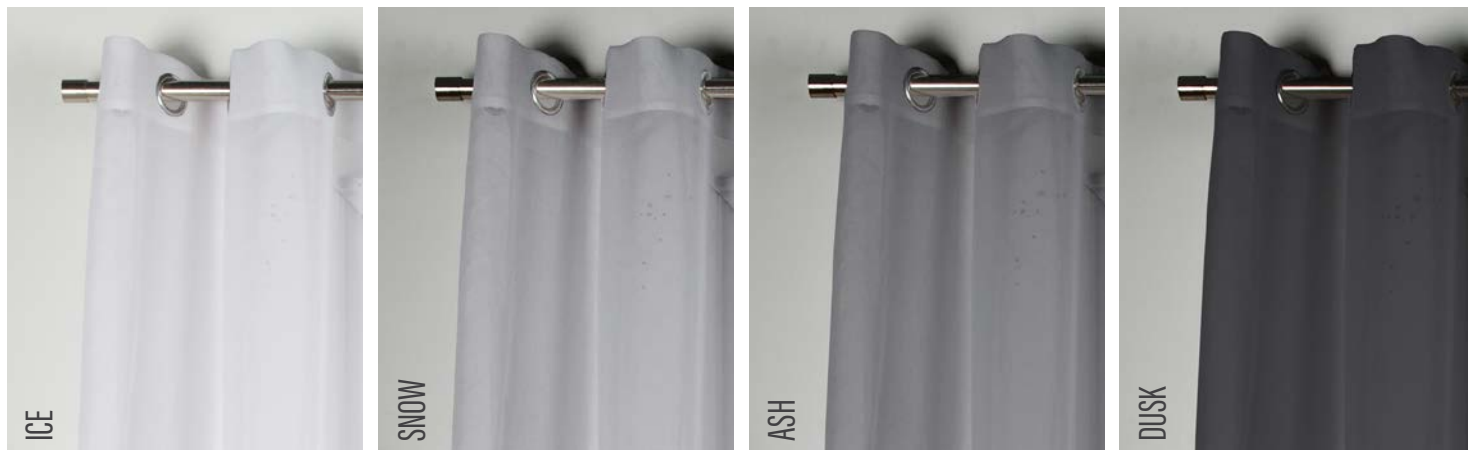


SHEER CURTAINS

The Filigree Sheer Range of ready to hang sheer curtains offers an abundance of sophisticated attributes suitable for a diverse range of interior decorating schemes.

Crafted using a robust Polyester yarn: we choose Polyester because it gives the softness and durability required and suited to daily living. The Polyester offers a generous amount of light filtration and anti-mould attributes: allowing for easy on-going maintenance and high colourfastness durability.





Mykonos is woven from our unique Polyester yarn and features a linen look slubbed effect. The fabric has a matte finish and is available in extra wide with sizes, perfect for wall to wall coverage. An eyelet header presents a more modern persona in the interior. Place a roller blind behind for a stunning layering effect.

MYKONOS CURTAIN

Slubbed Linen Look
 Eyelet
 100% Polyester
 4 Colours - Ash | Dusk | Ice | Snow
 Sold as a single curtain

SIZES

270 x 221 cm
 360 x 221 cm
 450 x 221 cm
Sizing Guide P29

SUITABILITY

General Living
 Bedrooms
 Home Office
 Layering



Santorini is woven from our unique Polyester yarn and features a linen look slubbed effect. The fabric has a matte finish and is available in extra wide with sizes, perfect for wall to wall coverage. Place a roller blind behind for a stunning layering effect. Santorini is the exact same fabric as Mykonos however with a more traditional heading style.

SANTORINI CURTAIN

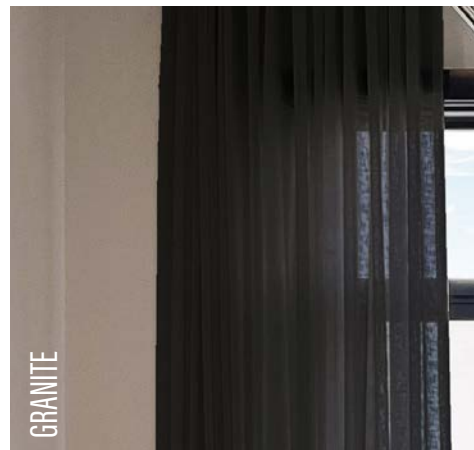
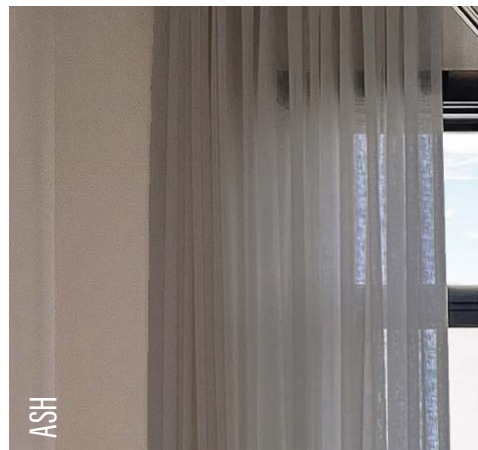
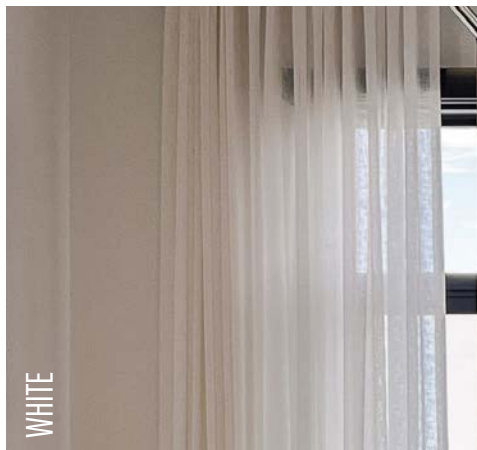
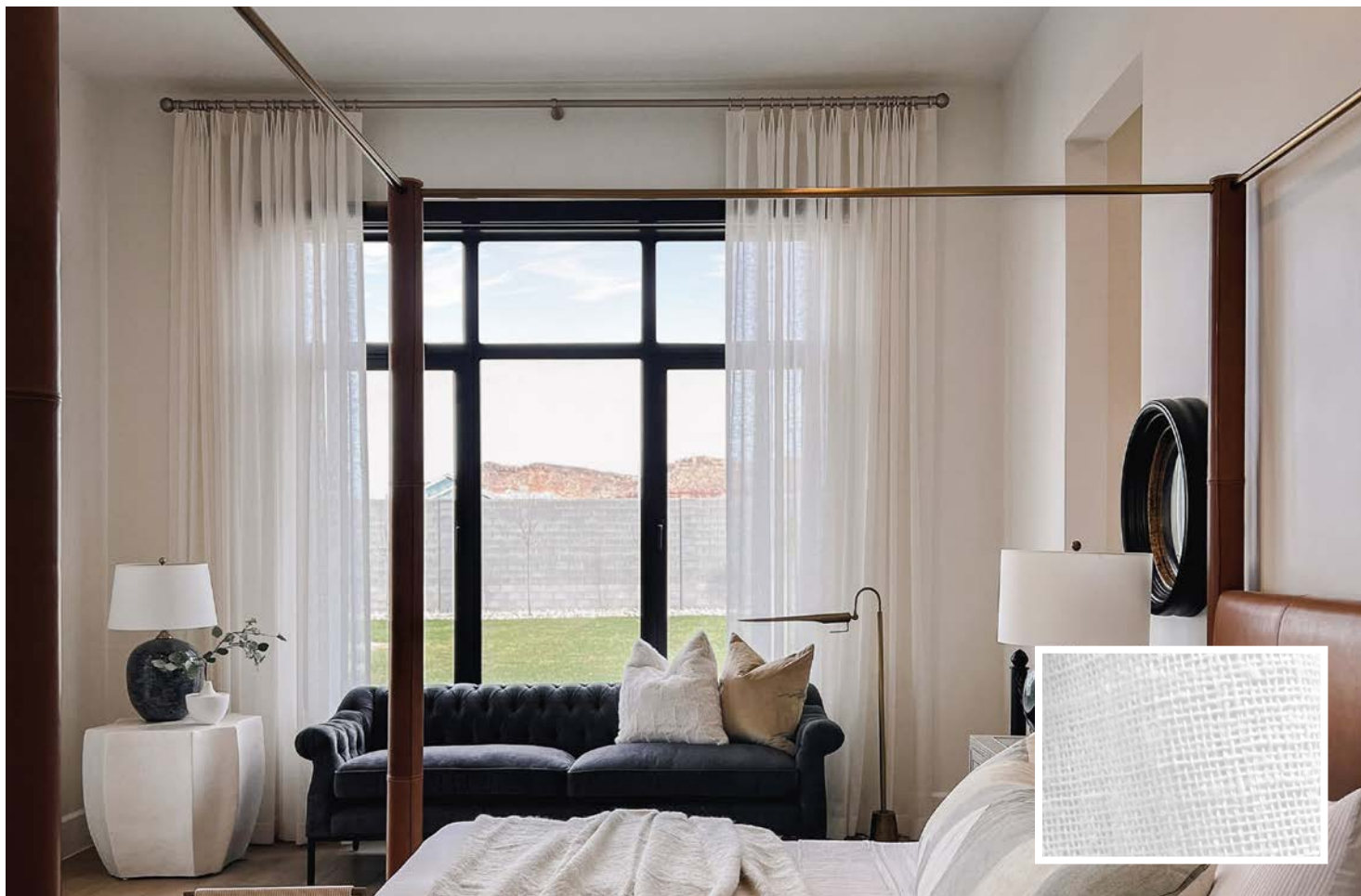
Slubbed Linen Look
 Pencil Pleat
 100% Polyester
 4 Colours - Ash | Dusk | Ice | Snow
 Sold as a single curtain

SIZES

270 x 221 cm
 360 x 221 cm
 450 x 221 cm
Sizing Guide P29

SUITABILITY

General Living
 Bedrooms
 Home Office
 Layering



Monte Carlo is woven from our unique Polyester yarn and features a luxurious linen look texture. The fabric has a matte finish and is stylishly simple, perfect for a seamless decorative scheme. Place a roller blind behind for a stunning layering effect. Monte Carlo is the exact same fabric as Monaco however with a different more traditional heading style.

MONTE CARLO CURTAIN

Textured Linen Look
Pencil Pleat
100% Polyester
3 Colours - White | Ash | Granite
Sold as a single curtain

SIZES

270 x 221 cm
360 x 221 cm
450 x 221 cm
Sizing Guide P29

SUITABILITY

General Living
Bedrooms
Home Office
Layering



Monaco is woven from our unique Polyester yarn and features a luxurious linen look texture. The fabric has a matte finish and is stylishly simple, perfect for a seamless decorative scheme. An eyelet header presents a more modern persona in the interior. Place a roller blind behind for a stunning layering effect.

MONACO CURTAIN

Textured Linen Look
Eyelet
100% Polyester
3 Colours - White | Ash | Granite
Sold as a single curtain

SIZES

270 x 221 cm
360 x 221 cm
450 x 221 cm
Sizing Guide P29

SUITABILITY

General Living
Bedrooms
Home Office
Layering



BLOCKOUT CURTAINS

The Filigree Blockout Range of ready to hang curtains offer an abundance of sophisticated attributes suitable for a diverse range of interior decorating schemes.

Crafted using a robust Polyester yarn: we choose Polyester because it gives the softness and durability required and suited to daily living. The Polyester offers a supreme level of blackout as well as anti-mould attributes: allowing for easy on-going maintenance and high colourfastness durability.

All Filigree Blockout Curtains are coated with a unique blackout coating to achieve 100% blackout during the day, and 100% privacy during the evening.





Harris is woven from our unique Polyester yarn and features a luxurious soft linen look texture. The fabric has a matte finish and is stylishly simple, perfect for a seamless decorative scheme. The stainless steel eyelets allow for smooth gliding and are easy to slide onto any fixed rod. Place a sheer curtain or roller blind behind for a stunning layering effect.

Harris is woven from our unique Polyester yarn and features a luxurious soft linen look texture. The fabric has a matte finish and is stylishly simple, perfect for a seamless decorative scheme. The stainless rings allow for smooth gliding and are easy to slide onto any fixed rod. For a more traditional look, the rings can be replaced by regular hooks and clipped into a track. Place a sheer curtain or roller blind behind for a stunning layering effect.

HARRIS EYELET

Soft Linen Look Curtain
Blockout Coating
100% Polyester
3 Colours - Ash | Natural | Slate
Sold as a single* and a pair

SIZES

140 x 221 cm*
180 x 221 cm
240 x 221 cm
Sizing Guide P29

SUITABILITY

General Living
Bedrooms
Home Office
Layering



HARRIS PENCIL PLEAT

Soft Linen Look Curtain
Blockout Coating
100% Polyester
3 Colours - Ash | Natural | Slate
Sold as a pair of curtains

SIZES

210 x 220 cm
270 x 220 cm
Sizing Guide P29

SUITABILITY

General Living
Bedrooms
Home Office
Layering





Haven is woven from our unique Polyester yarn and features a think linen look texture. The fabric has a matte finish and features a textured subtle stripe design. The stainless steel eyelets allow for smooth gliding and are easy to slide onto any fixed rod. Place a sheer curtain or roller blind behind for a stunning layering effect.

Haven is woven from our unique Polyester yarn and features a thick linen look texture. The fabric has a matte finish and is stylishly simple, perfect for a seamless decorative scheme. The stainless rings allow for smooth gliding and are easy to slide onto any fixed rod. For a more traditional look, the rings can be replaced by regular hooks and clipped into a track. Place a sheer curtain or roller blind behind for a stunning layering effect.

HAVEN EYELET

Linen Look Jacquard Curtain
 Blockout Coating
 100% Polyester
 3 Colours - Clay | Driftwood | Granite
 Sold as a single curtain

SIZES

180 x 221 cm
 240 x 221 cm
Sizing Guide P29

SUITABILITY

General Living
 Bedrooms
 Home Office
 Layering



HAVEN PENCIL PLEAT

Linen Look Jacquard Curtain
 Blockout Coating
 100% Polyester
 5 Colours - Clay | Driftwood | Granite | Onyx | Slate
 Sold as a pair of curtains

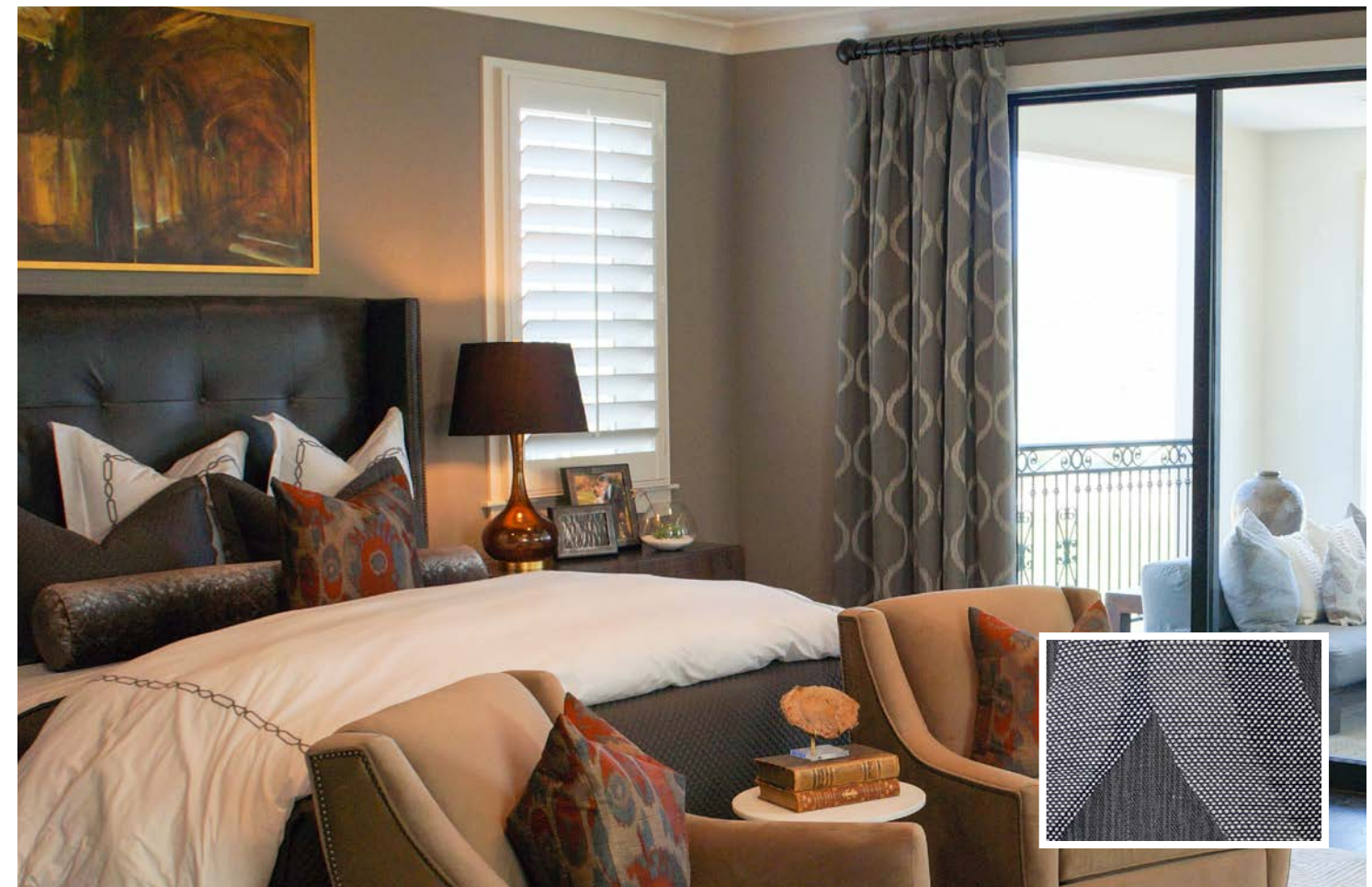
SIZES

210 x 220 cm
 270 x 220 cm
Sizing Guide P29

SUITABILITY

General Living
 Bedrooms
 Home Office
 Layering





Langton is woven from our unique Polyester yarn and features a soft and natural look texture. The fabric has a matte finish and features a decorative ogee pattern. The stainless steel eyelets allow for smooth gliding and are easy to slide onto any fixed rod. Place a sheer curtain or roller blind behind for a stunning layering effect.

Langton is woven from our unique Polyester yarn and features a soft and natural look texture. The fabric has a matte finish and features a decorative ogee pattern. The stainless rings allow for smooth gliding and are easy to slide onto any fixed rod. For a more traditional look, the rings can be replaced by regular hooks and clipped into a track. Place a sheer curtain or roller blind behind for a stunning layering effect.

LANGTON EYELET

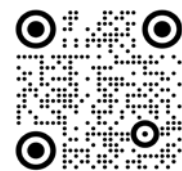
Natural Look Jacquard Curtain
Blockout Coating
100% Polyester
3 Colours - Charcoal | Natural | Silver
Sold as a single curtain

SIZES

140 x 221 cm
Sizing Guide P29

SUITABILITY

General Living
Bedrooms
Layering



LANGTON PENCIL PLEAT

Natural Look Jacquard Curtain
Blockout Coating
100% Polyester
3 Colours - Charcoal | Natural | Silver
Sold as a pair of curtains

SIZES

180 x 220 cm
240 x 220 cm
Sizing Guide P29

SUITABILITY

General Living
Bedrooms
Layering



ROOM DARKENING CURTAINS

The Filigree Room Darkening Range of ready to hang curtains offer an abundance of sophisticated attributes suitable for a diverse range of interior decorating schemes.

Crafted using a robust Polyester yarn: we choose Polyester because it gives the softness and durability required and suited to daily living. The Polyester offers a supreme level of blackout as well as anti-mould attributes: allowing for easy on-going maintenance and high colourfastness durability.

All Filigree Room Darkening curtains are made with a triple weave composition to give it its unique dual purpose attributes.



Umbra is woven from our unique Polyester yarn and features a triple weave soft matte texture. The fabric has a plain finish and is smooth to the touch. The stainless steel eyelets allow for seamless gliding and are easy to slide onto any fixed rod. Place a sheer curtain or roller blind behind for a stunning layering effect.

UMBRA CURTAIN

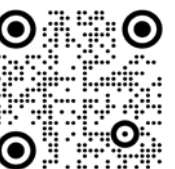
Soft Matte Curtain
Triple Weave
100% Polyester
3 Colours - Black | Steel | Truffle
Sold as a single curtain

SIZES

140 x 221 cm
Sizing Guide P29

SUITABILITY

General Living
Bedrooms
Home Office
Layering





Cato is woven from our unique Polyester yarn and features a triple weave linen look texture. The fabric has a plain matte finish and is soft to the touch. The stainless steel eyelets allow for smooth gliding and are easy to slide onto any fixed rod. Place a sheer curtain or roller blind behind for a stunning layering effect.

Cato is woven from our unique Polyester yarn and features a triple weave linen look texture. The fabric has a plain matte finish and is soft to the touch. The stainless rings allow for smooth gliding and are easy to slide onto any fixed rod. For a more traditional look, the rings can be replaced by regular hooks and clipped into a track. Place a sheer curtain or roller blind behind for a stunning layering effect.

CATO EYELET

Linen Look Curtain
Triple Weave
100% Polyester
3 Colours - Ash | Charcoal | Linen
Sold as a single* and a pair

SIZES

140 x 221 cm*
180 x 221 cm
240 x 221 cm
Sizing Guide P29

SUITABILITY

General Living
Bedrooms
Home Office
Layering



CATO PENCIL PLEAT

Linen Look Curtain
Triple Weave
100% Polyester
3 Colours - Ash | Charcoal | Linen
Sold as a pair of curtains

SIZES

210 x 220 cm
270 x 220 cm
Sizing Guide P29

SUITABILITY

General Living
Bedrooms
Home Office
Layering



WINDOW BLINDS

The Filigree range of ready to hang Roller and Venetian Blinds offer an abundance of sophisticated attributes suitable for a diverse range of interior decorating schemes.

All Blinds are crafted using a robust composition of either Polyester or PVC which makes them suitable for areas that attract a lot of moisture. Both materials offer a supreme level anti-mould attributes: allowing for easy on-going maintenance and high colourfastness durability.



Pacific is a sophisticated venetian blind made from a robust PVC material that mimics the plantation shutter look. Pacific features a crisp white satin finish with a faux wood look that is fully mould resistant. Customisation like no other means you can enjoy daytime light filtering and evening privacy: all you need to do is slightly tilt or lift the slats to the desired angle/height.

PACIFIC VENETIAN

Smooth White Satin Finish
 Faux Wood Look
 PVC
 1 Colour - White

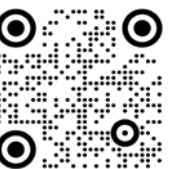
SIZES

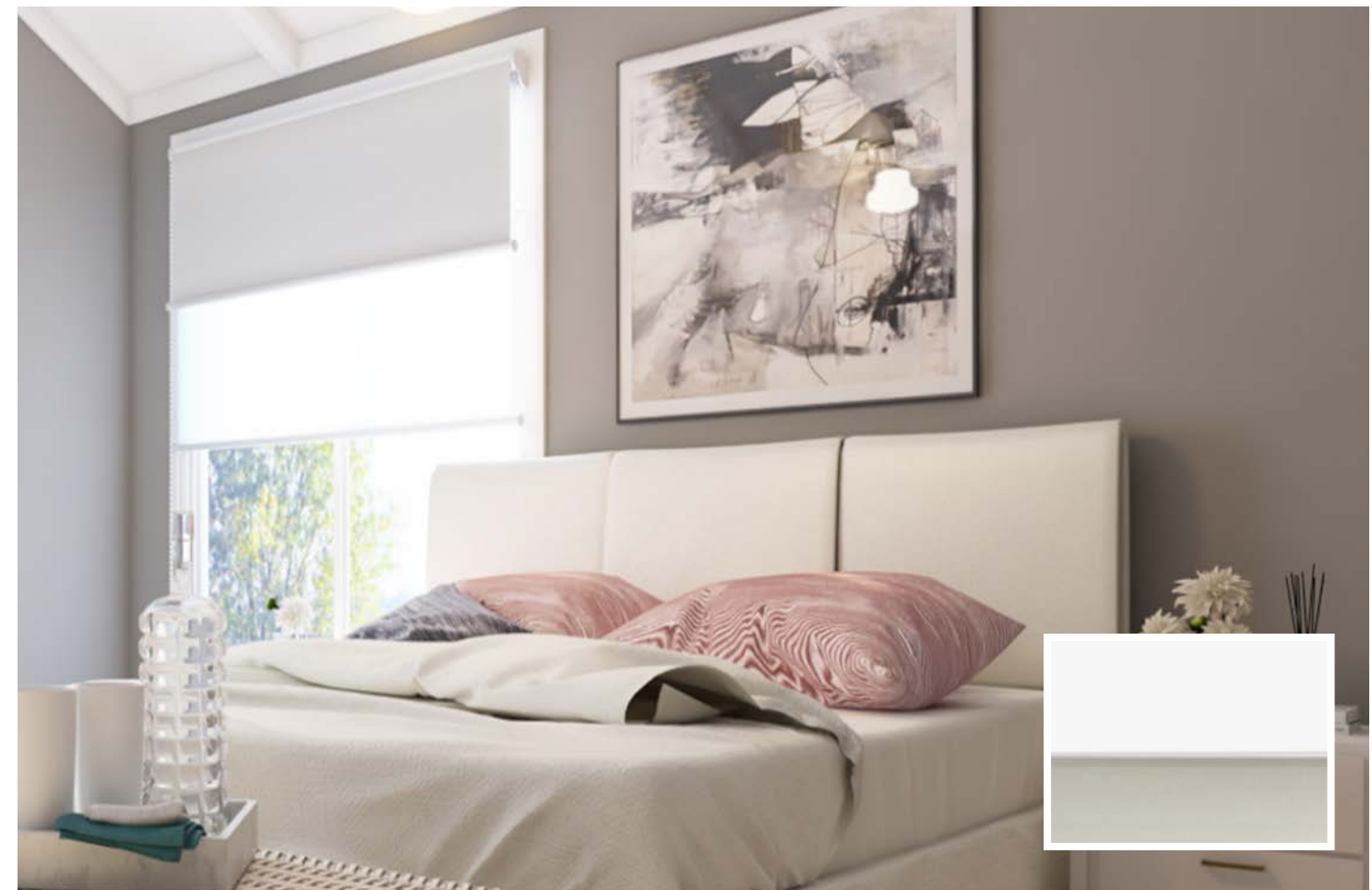
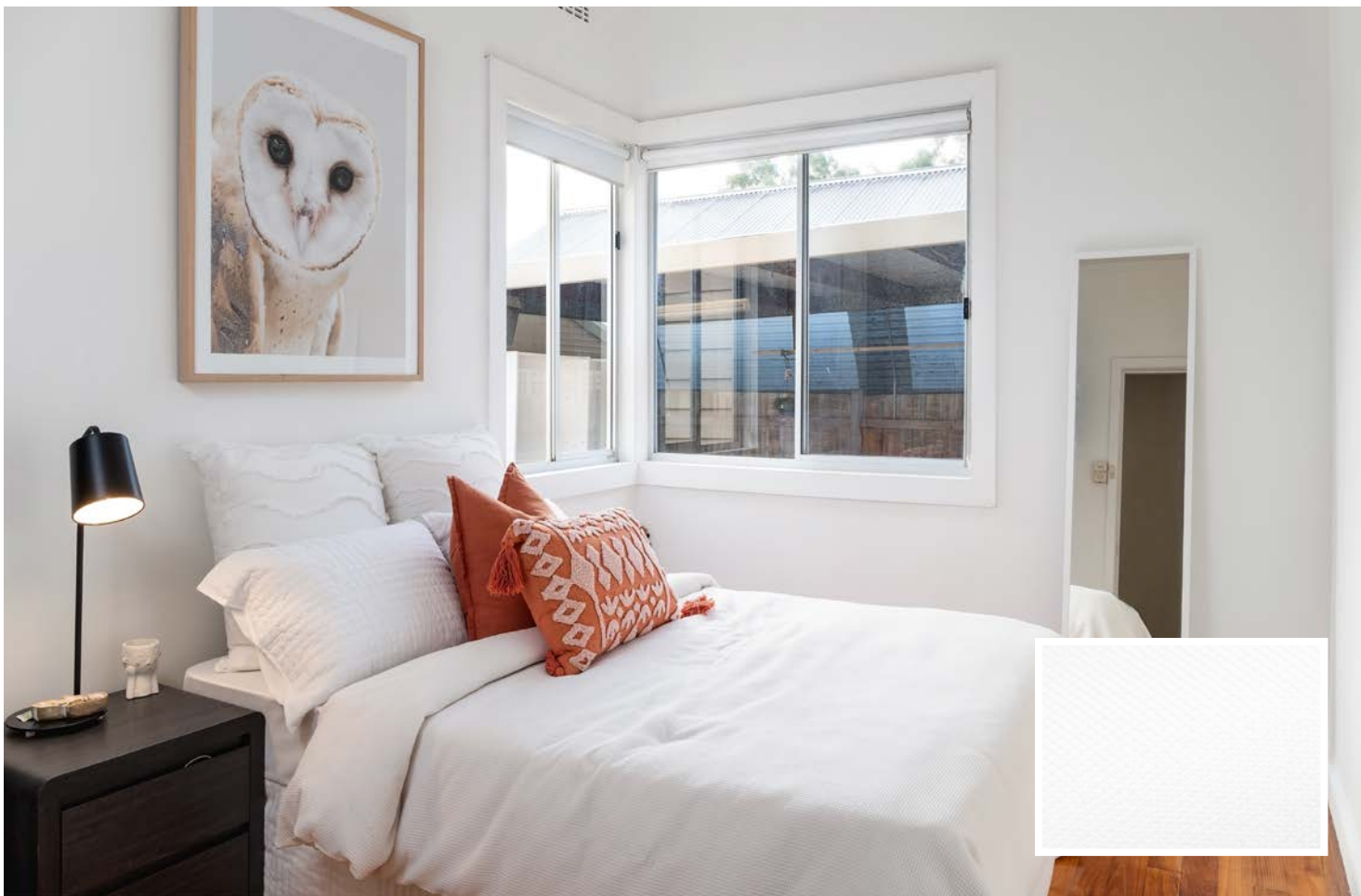
60 x 210 cm	150 x 210 cm
90 x 210 cm	180 x 210 cm
120 x 210 cm	210 x 210 cm

Sizing Guide P31

SUITABILITY

General Living
 Bathrooms
 Bedrooms
 Home Office
 Layering





Atria is a woven fabric single roller blind with a potent blackout coating. It features a white plastic ball chain which can be used to navigate the distribution of the blind down the length of the window. It also features a concealed base bar for a seamless and sophisticated look on the window. Pair a sheer curtain on top for a stylish layering effect.

Visio is a sophisticated dual purpose blind made from a robust coated and sheer fabric material. Visio features a plain matte finish blockout and sheer matte fabric blind with a smooth gliding mechanism. Customisation like no other means you can enjoy daytime light filtering and evening privacy: all you need to do is raise the front blockout blind to reveal the sheer layer behind.

ATRIA BLIND

Plain Matte Roller Blind
 Blockout
 100% Polyester
 4 Colours - Black | Silver | Stone | White

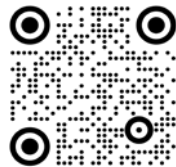
SIZES

60 x 210 cm 150 x 210 cm
 90 x 210 cm 180 x 210 cm
 120 x 210 cm 210 x 210 cm

Sizing Guide P31

SUITABILITY

General Living
 Bathrooms
 Bedrooms
 Home Office
 Layering



VISIO DOUBLE ROLLER

Plain Matte Double Roller Blind
 Dual Purpose - Blockout & Sheer
 100% Polyester
 4 Colours - Black | Silver | Stone | White

SIZES

60 x 210 cm 180 x 210 cm
 90 x 210 cm 210 x 210 cm
 120 x 210 cm 240 x 210 cm

150 x 210 cm *Sizing Guide P31*

SUITABILITY

General Living
 Bathrooms
 Bedrooms
 Home Office
 Layering



WINDOW ACCESSORIES

The Filigree Range of Window Accessories curtains feature an abundance of sophisticated attributes suitable for a diverse range of interior decorating schemes. All accessory products are easy to install have been specifically created to colour coordinate to our existing range of ready to hang curtains and can be used interchangeably with an array of curtain products.





The Filigree Basic Rod set is a universal product colour coordinated specifically to match the Filigree ready to hang Curtain Range. It features a 28mm painted metal rod that is fully extendable, alongside a matching painted metal bracket. The ends are covered with sleek plastic caps for a seamless finish on your window frame. The set also comes with the required screw and wall plugs.

The Filigree Rod Finial Ring set is a universal product colour coordinated specifically to match the Filigree ready to hang Curtain Range. It features a 28mm cast iron rod that is fully extendable, alongside a matching bracket and ring set. The ends are covered with cast iron finial for a sophisticated finish on your window frame. The set also comes with the required screw and wall plugs.

BASIC ROD SET

Extendable Rod
Smooth Painted Metal
3 Colours - Black | Silver | White
Comes with colour coordinated brackets

SIZES

250 cm
400 cm
Sizing Guide P29

SUITABILITY

Universal



ROD FINIAL RING SET

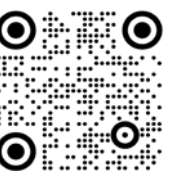
Extendable Rod with Ball Finial
Plated Finish
Cast Iron
1 Colour - Silver
Comes with colour coordinated brackets & rings

SIZES

140 cm
250 cm
400 cm
Sizing Guide P29

SUITABILITY

Universal



THE FILIGREE DIFFERENCE

At Filigree, we are passionate about design. Our Readymade window furnishings are inspired by the hustle and bustle of every day living. Attention to detail and quality are at the heart of every Filigree creation, making them not only beautiful, but a truly luxurious addition to your home.

We choose to use predominantly Polyester fibres for their robust durability and soft composition suited to daily living. At Filigree our products are built to last and withstand the busy home environment, using a combination of materials sourced and made by world-class manufacturers.

We are one of the only curtain and blind suppliers that has our own full in-house Quality Assurance team and lab, and along with our talented Product Development team, spend months perfecting the balance of our fibres before a product is released.

All of our products are consistently inspected (every single production batch) to ensure they meet the highest standard before they are packaged and shipped to you. We know that this kind of care is a necessary part of the quality we promise. The result? Products that weather busy homes and stand the test of time.

GENERAL CURTAIN CARE

Treat spots and spills immediately with warm water and a paper towel. Blockout curtains should not be dry-cleaned. We recommend caring for your curtain by only doing a cold hand wash. Please do not bleach, soak, rub, wring or tumble dry.

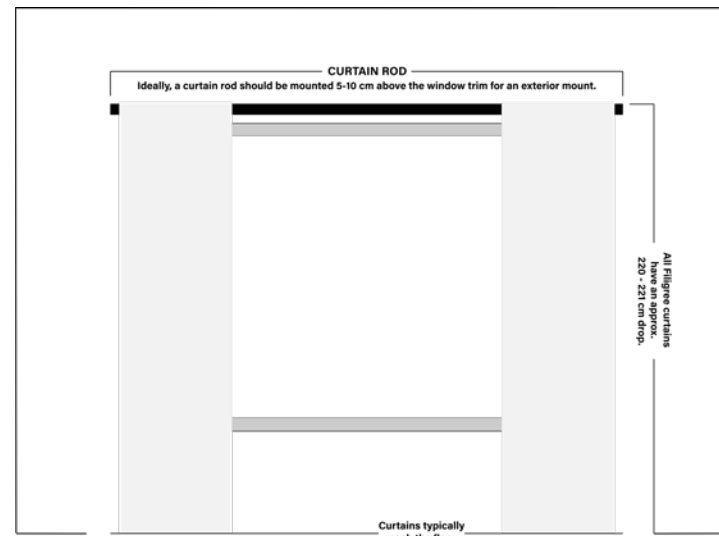
For drying purposes, ensure that the curtains drip dry in a shady area and always avoid touching the curtain coating when wet. To remove creasing, hang the curtains in a warm place – the creases will disappear after a few days. Alternatively, you can use a dry iron, but only on the fabric side.

GENERAL BLIND CARE

We recommend gently vacuuming your blind with a soft brush attachment. Please do not wash or Iron. If necessary spot clean with a damp clean sponge on the flat surface, using warm water and dissolved soap flakes. Sponge with fresh water and dry gently with a clean towel. It is always recommended to test in an inconspicuous area before spot cleaning.

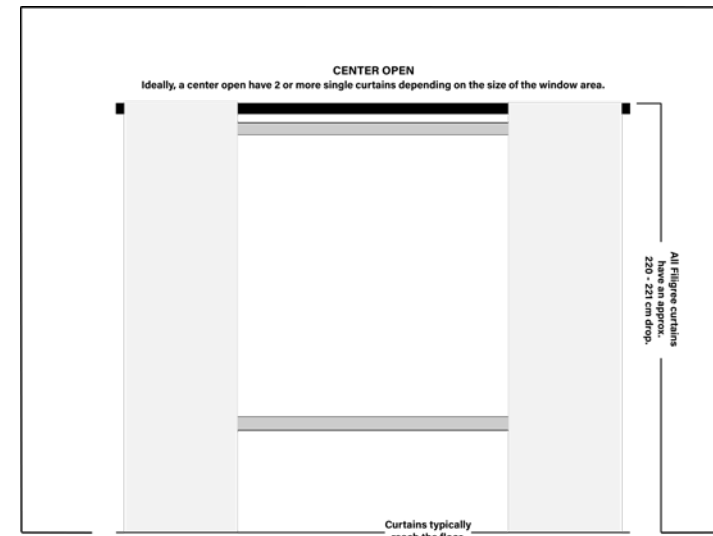
CURTAIN PLACEMENT AND SIZING

Well-proportioned curtains can tie an entire room together, but it can be tricky to get the desired size and placement right for each individual window space. A curtain should be large enough to fully cover your window with a recommended spillage of roughly 10-20% either side dependent on your wall area. Allowing for spillage will prevent exterior view obstruction when the curtains are fully open.

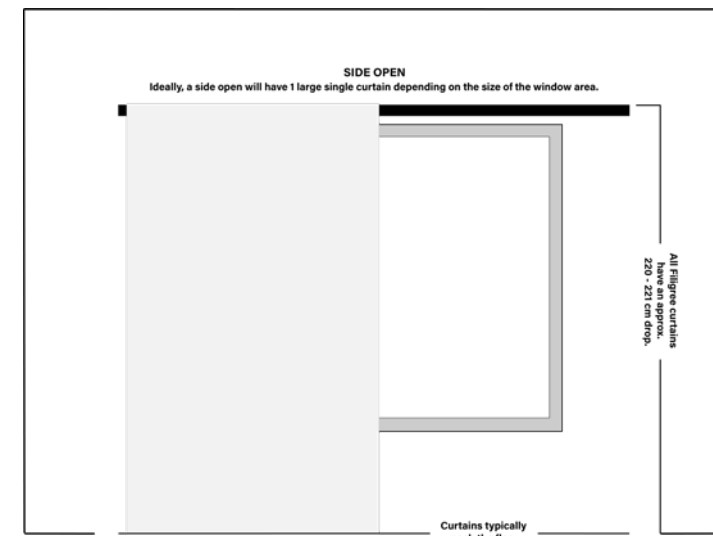


When choosing a curtain, it pays to consider the area that the curtain is for and determine the sizing specifically for that window area. When gathering your window measurements you should always consider a side or center open. Having a center open will require multiple curtain panels. Some Filigree curtain products come sold as a pair and some come sold as a single. Please read the attributes of each curtain design carefully before choosing a curtain product.

CENTER OPEN (CENTER DRAW)



SIDE OPEN (ONE WAY DRAW)



We have put together this curtain placement & sizing guide for you to navigate the options and select a curtain that is perfect for your space. Our recommendations are based off average interior window heights and widths. When in doubt, go for the biggest size possible and available.

If your window measurement is larger than our "To Fit Window" guide, or is too big for a particular pair of curtains we strongly recommend you purchase multiple single curtains to cover the entirety of the exposed window area, while still allowing for our 10-20% spillage rule. If you are still unsure please contact our customer service or speak to your sales professional.

INTERIOR DESIGN TIP!

Hang your curtains higher on your window to make your windows appear larger and your ceilings taller. This will also give the illusion of a more a spacious area.

SHEERS

Filigree ready to hang sheer curtains come packaged as a single curtain. If you would like a center open, we recommend you purchase two single curtains. Please use to the following guides as a rough estimate to help you achieve your desired window furnishing outcome.

TO FIT WINDOW (SIDE OPEN)	YOU WILL NEED
180 cm x 221 cm	270 cm x 221 cm
240 cm x 221 cm	360 cm x 221cm
300 cm x 221 cm	450 cm x 221 cm

TO FIT WINDOW (CENTRE OPEN)	YOU WILL NEED
180 cm x 221 cm	2 x 270 cm x 221 cm
240 cm x 221 cm	2 x 360 cm x 221cm
300 cm x 221 cm	2 x 450 cm x 221 cm

BLOCKOUT & ROOM DARKENING

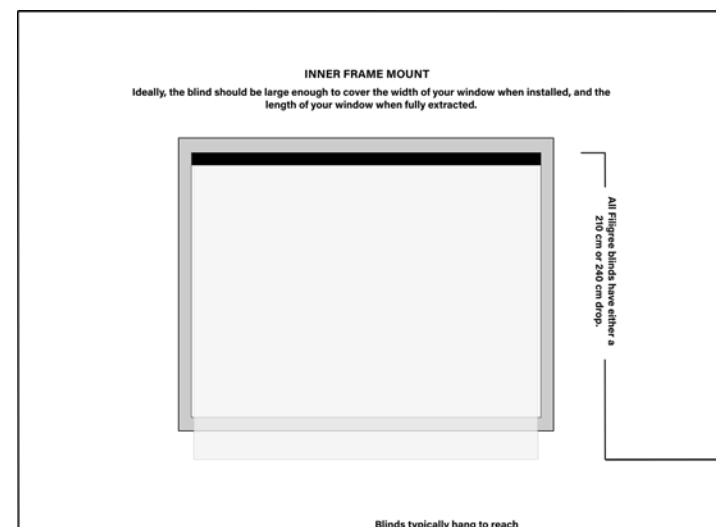
Filigree ready to hang blockout and room darkening curtains come packaged as either a single or pair of curtains. Please refer to the attribute section below each product for specifics. If you would like a center open, we recommend you purchase two single curtains, unless the product comes sold as a pair.

TO FIT WINDOW	YOU WILL NEED
180 cm x 221 cm	2 x 140 cm x 221 cm (center) or 240 cm x 220 cm (side)
240 cm x 221 cm	2 x 140 cm x 221cm (center) or 270 cm x 221 cm (side)
300 cm x 221 cm	2 x 180 cm x 220cm (center) or 2 x 240 cm x 220 cm (center)
360 cm x 221cm or bigger	Multiple single curtains of choice.

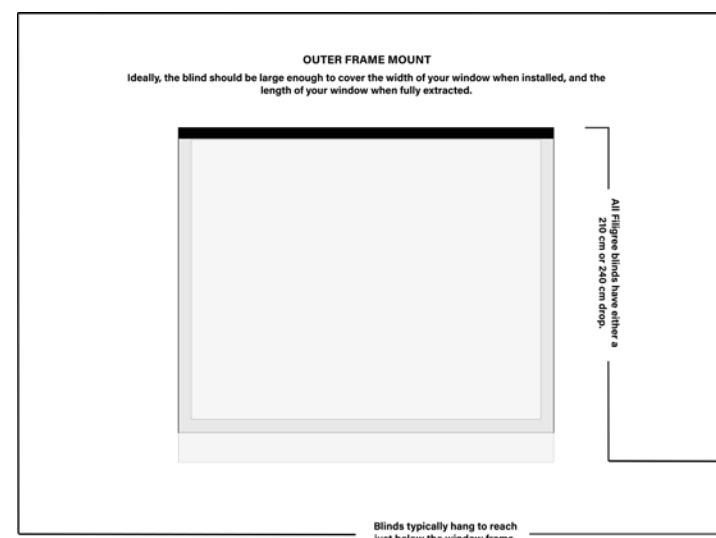
BLIND PLACEMENT AND SIZING

Like a curtain, a well-proportioned blind can tie an entire room together, but it can also be tricky to get the desired size and placement right for each individual window space. A blind should typically be large enough to cover the width of your window when installed, and the length of your window when fully extracted. When choosing a blind, it pays to consider the area that the blind is for and determine the sizing specifically for that window area. When gathering your window measurements you should always consider an inner or outer frame mount first. An inner frame mount means the blind is installed on the inside of the window frame. An outer frame mount means the blind is installed on the outside of the window frame.

INNER FRAME MOUNT



OUTER FRAME MOUNT



It is important to note that a blind installed on the inside of the window frame will result in small gaps either side of the fabric due to the way the bracket system extrudes. If you would like to achieve full blackout we encourage you to install your blind on the outer window frame. Please read the attributes of each blind product carefully before choosing your blind.

LAYERING WINDOW COVERINGS

Achieve a custom made look by layering your window coverings. You can get a multi-functional window covering solution by mix and matching different window furnishing products.

Our Layering Recommendations Include:

LAYERING COMBO	BENEFITS	CORRESPONDING FILIGREE PRODUCTS
Sheer Curtains over Roller Blinds	Privacy + Softening + Light Control	Mykonos/Santorini/Monte Carlo/Monaco + Atria Roller Blind
Sheer Curtains underneath Blockout Curtains	Privacy + Light Control	Mykonos/Santorini/Monte Carlo/Monaco + Harris/Haven/Langton
Blockout Curtains over Blockout Blinds	Max Light Control + Softening	Harris/Haven/Langton + Atria/Visio Roller Blind

Head to www.basfordbrands.com or @basfordbrands on Facebook for the ultimate collection of window furnishing inspiration.





COLOUR REFERENCE

Please note all photography in this catalogue is intended as a visual representation only. Although care is taken to ensure images are not misrepresented, colours are not exact matches due to variance in printer standards and monitor calibration. For any specific inquiries concerning colour swatches please contact our customer service team or speak to your sales representative.

SIZE REFERENCE

Please note all illustrative diagrams in this catalogue are intended as a visual representation only. Although care is taken to ensure sizes are not misrepresented, the diagrams and tables should be strictly used as a rough guide only and must not be assumed as exact. Please note that all "To Fit Window" sizes in the provided tables are based off average sized windows.

We encourage you to take your time measuring your window. Our advice is given in good faith and should not be considered a guarantee. If in any doubt, always consult a professional. For any specific inquiries concerning product sizing please contact our customer service team or speak to your sales representative.

CARE

Please refer to your care label that will be located either on the product packaging itself or on the soft goods hang-tag/label sewn on the seam of your item. Always refer to your care label before attempting ANY cleaning. Treat spills and stains as soon as possible to make stain removal easier and minimise the risk of permanent damage. Our advice is given in good faith and should not be considered a guarantee. If in any doubt, always consult a professional cleaning company.

Filigree Fabrics Australia Pty Ltd

Web: basfordbrands.com/brands/filigree

Email: customerservice@basfordbrands.com

Free Call: 1300 656 626

@basfordbrands #filigreeaus

Filigree Fabrics New Zealand Pty Ltd

Web: basfordbrands.com/brands/filigree

Email: customerservice@basfordbrands.co.nz

Free Call: 0800 109 010

@basfordbrands #filigreenz

Packaged General Manager

Ben Herrgott

Email: bherrgott@basfordbrands.com

Australasian Sales Manager

Pip Collins

Email: pcollins@basfordbrands.com



basfordbrands

filigree

COMPLETE LIVING