

EST 1945

PARK AVENUE COLLECTION
WALDORF

MAURICE KAIN

DESIGNED IN NEW ZEALAND & AUSTRALIA
MADE ACROSS THE GLOBE


Maurice Kain





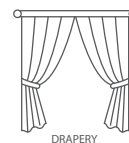
Maurice Kain

WALDORF

DECORATIVE JACQUARD DRAPERY FABRIC

Co-ordinates with Hilton & Waldorf

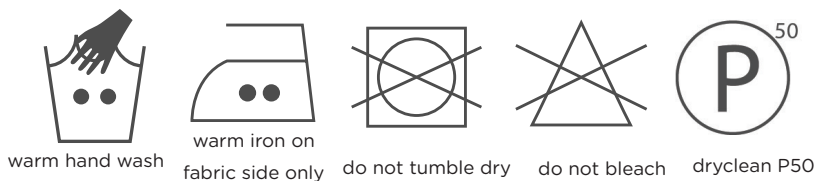
as part of the PARK AVENUE Collection



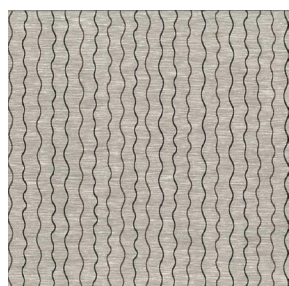
| | | | |
|--------------------------|-------------------|--------------------------------|--------|
| COLLECTION NAME | Park Avenue | PATTERN REPEAT | 23.5cm |
| DESIGN NAME | Waldorf | CONTINUOUS | N |
| BRAND | Maurice Kain | ADDITIONAL FINISHING | N/A |
| NUMBER OF COLOURS | 5 | WEIGHT (GSM) | 199gsm |
| FABRIC TYPE | Stripe | ROLL SIZE | 40m |
| USAGE | Curtains | COLOURFASTNESS TO LIGHT | 7 |
| COMPOSITION | 87%POLY/13%COTTON | FLAMMABILITY | N |
| WIDTH | 140cm | ABRASION | N/A |

CARE INSTRUCTIONS

Regular care will minimize need for additional cleaning. Gently vacuum with appropriate attachment. Always exercise caution when spot cleaning. Test clean on non-exposed surface. Remove hooks rings & trims before cleaning. Gently vacuum regularly with appropriate attachment. Warm hand wash. Do not bleach. Do not rub or wring. Drip dry in shade. For best results hang curtains by their hooks to damp dry immediately. Use warm iron. Dry cleanable P 50. Possible shrinkage 3%.



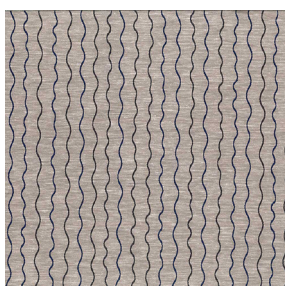
AVAILABLE COLOURS



BASALT



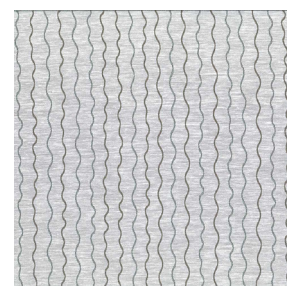
CARDINAL



PACIFIC



SAND



SEAFOAM