

EST 1945

SCANDI COLLECTION  
HELSINKI

MAURICE KAIN

DESIGNED IN NEW ZEALAND & AUSTRALIA  
MADE ACROSS THE GLOBE

  
Maurice Kain



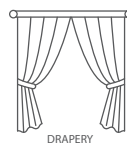


Maurice Kain

# HELSINKI

PRINTED COTTON DRAPERY FABRIC

Co-ordinates with Copenhagen, Oslo & Stockholm as part of the SCANDI Collection



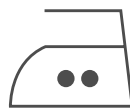
<b>COLLECTION NAME</b>	Scandi	<b>PATTERN REPEAT</b>	15.5cm
<b>DESIGN NAME</b>	Helsinki	<b>CONTINUOUS</b>	/
<b>BRAND</b>	Maurice Kain	<b>ADDITIONAL FINISHING</b>	/
<b>NUMBER OF COLOURS</b>	5	<b>WEIGHT (GSM)</b>	227gsm
<b>FABRIC TYPE</b>	Geometric	<b>ROLL SIZE</b>	40m
<b>USAGE</b>	Curtains	<b>COLOURFASTNESS TO LIGHT</b>	5-6
<b>COMPOSITION</b>	100% Cotton	<b>FLAMMABILITY</b>	N
<b>WIDTH</b>	140cm	<b>ABRASION</b>	N/A

## CARE INSTRUCTIONS

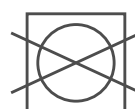
Regular care will minimize need for additional cleaning. Gently vacuum with appropriate attachment. Always exercise caution when spot cleaning. Test clean on non-exposed surface. Remove hooks rings and trims before cleaning. Do not soak, rub or wring. Drip dry in shade. Possible shrinkage 3%



warm hand wash



warm iron



do not tumble dry

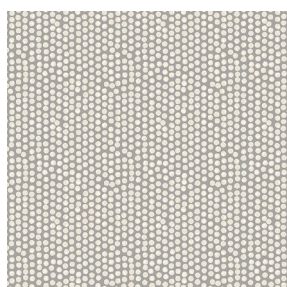


do not bleach

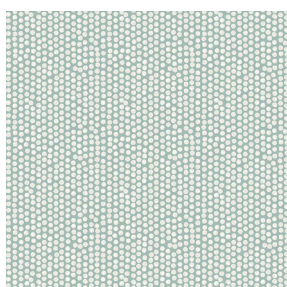


dryclean P50

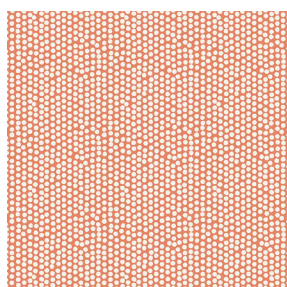
## AVAILABLE COLOURS



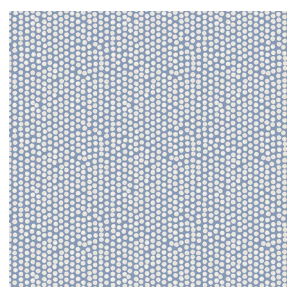
PEBBLE



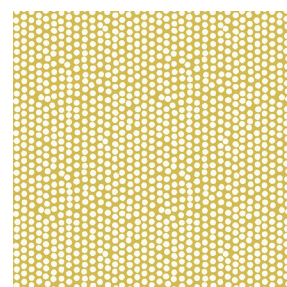
SEAFOAM



SHERBET



SKY BLUE



SUNSHINE