

EST 1945

EVERGREEN BLOCKOUT

MAURICE KAIN

DESIGNED IN NEW ZEALAND & AUSTRALIA
MADE ACROSS THE GLOBE

mk
Maurice Kain

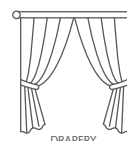




Maurice Kain

EVERGREEN BLOCKOUT

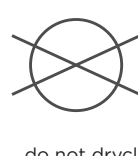
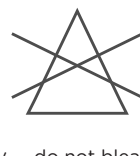
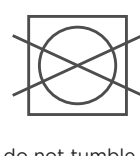
3-PASS BLOCKOUT COATED DRAPERY FABRIC



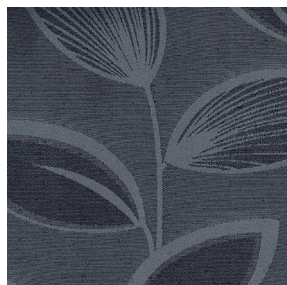
COLLECTION NAME	Evergreen	PATTERN REPEAT	39cm
DESIGN NAME	Evergreen Blockout	CONTINUOUS	N
BRAND	Maurice Kain	ADDITIONAL FINISHING	N/A
NUMBER OF COLOURS	11	WEIGHT (GSM)	460
FABRIC TYPE	Pattern	ROLL SIZE	40m
USAGE	Curtains	COLOURFASTNESS TO LIGHT	6
COMPOSITION	58% POLY/42% COTTON	FLAMMABILITY	N
WIDTH	145cm	ABRASION	N/A

CARE INSTRUCTIONS

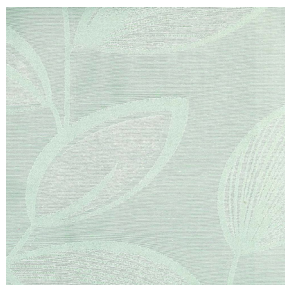
Regular care will minimize need for additional cleaning. Gently vacuum with appropriate attachment. Always exercise caution when spot cleaning. Test clean on non-exposed surface. Remove hooks rings and trims before cleaning. Do not soak, rub or wring. Drip dry in shade. Possible shrinkage 3%



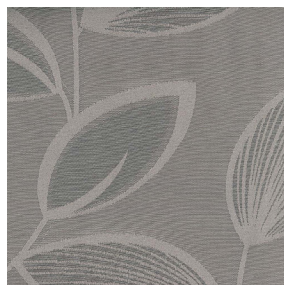
AVAILABLE COLOURS



COBALT



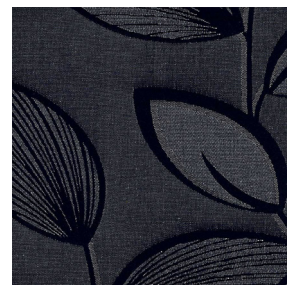
DEW



EARTH



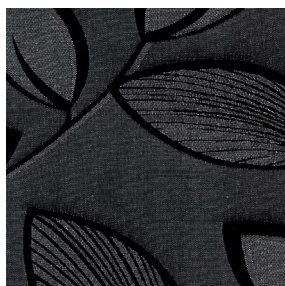
LILLY



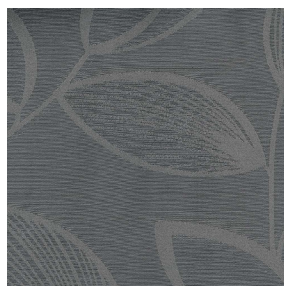
MIDNIGHT



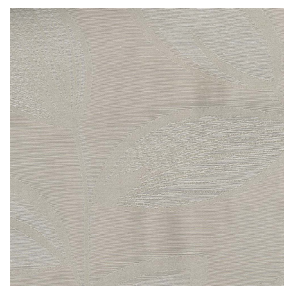
MIST



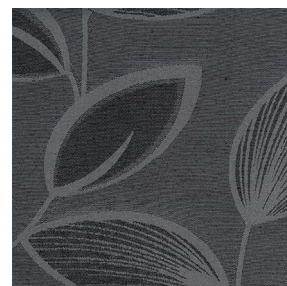
ONYX



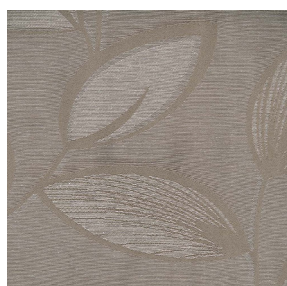
PEWTER



SAND



SLATE



TEA



basfordbrands