

EST 1945

EVERGREEN UNCOATED

MAURICE KAIN

DESIGNED IN NEW ZEALAND & AUSTRALIA

MADE ACROSS THE GLOBE

mk
Maurice Kain

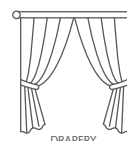




Maurice Kain

EVERGREEN UNCOATED

UNCOATED DRAPERY FABRIC



DRAPERY



CUSHIONS

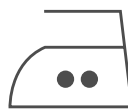
COLLECTION NAME	Evergreen	PATTERN REPEAT	39cm
DESIGN NAME	Evergreen UNC	CONTINUOUS	N
BRAND	Maurice Kain	ADDITIONAL FINISHING	N/A
NUMBER OF COLOURS	11	WEIGHT (GSM)	240gsm
FABRIC TYPE	Pattern	ROLL SIZE	40m
USAGE	Curtains	COLOURFASTNESS TO LIGHT	6
COMPOSITION	58% POLY/42% COTTON	FLAMMABILITY	N
WIDTH	145cm	ABRASION	N/A

CARE INSTRUCTIONS

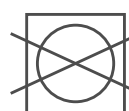
Regular care will minimize need for additional cleaning. Gently vacuum with appropriate attachment. Always exercise caution when spot cleaning. Test clean on non-exposed surface. Remove hooks rings and trims before cleaning. Do not soak, rub or wring. Drip dry in shade. Possible shrinkage 3%



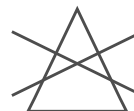
warm hand wash



warm iron on
fabric side only



do not tumble dry

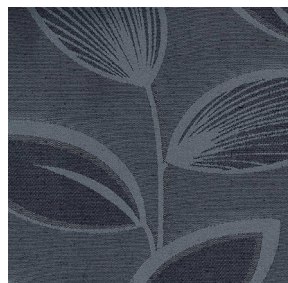


do not bleach

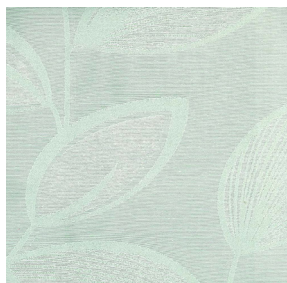


dry clean P50

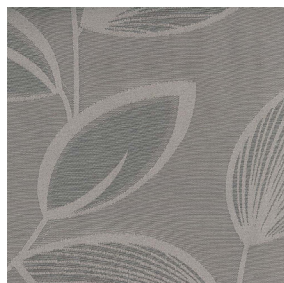
AVAILABLE COLOURS



COBALT



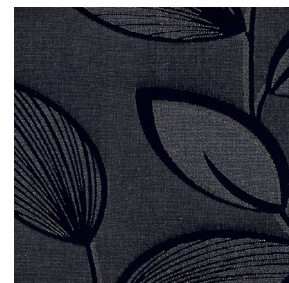
DEW



EARTH



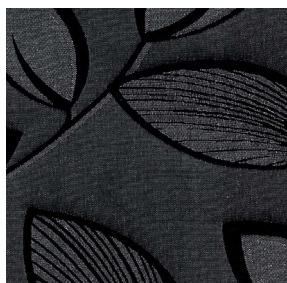
LILLY



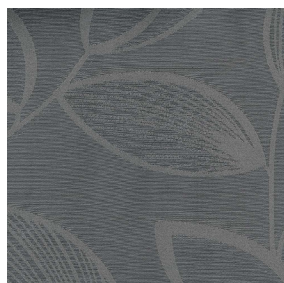
MIDNIGHT



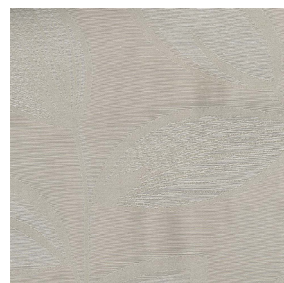
MIST



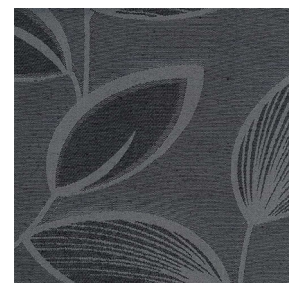
ONYX



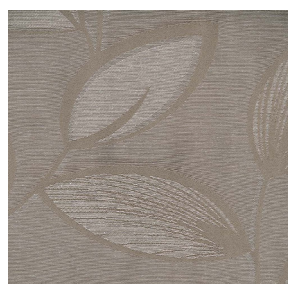
PEWTER



SAND



SLATE



TEA



basfordbrands