

EST 1945

DURHAM
CASTLES COLLECTION

MAURICE KAIN

DESIGNED IN NEW ZEALAND & AUSTRALIA
MADE ACROSS THE GLOBE


Maurice Kain



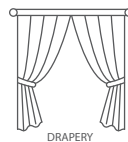


Maurice Kain

DURHAM

JAQUARD DRAPERY FABRIC

Co-ordinates with Conway, Lewes & Rochester as part of the CASTLES collection



DRAPERY



CUSHIONS

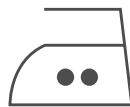
COLLECTION NAME	Castles	PATTERN REPEAT	N/A
DESIGN NAME	Durham	CONTINUOUS	N
BRAND	Maurice Kain	ADDITIONAL FINISHING	N/A
NUMBER OF COLOURS	8	WEIGHT (GSM)	296
FABRIC TYPE	Pattern	ROLL SIZE	40m
USAGE	Curtains	COLOURFASTNESS TO LIGHT	6
COMPOSITION	50% Polyester 50% Cotton	FLAMMABILITY	N

CARE INSTRUCTIONS

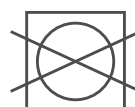
Regular care will minimize need for additional cleaning. Gently vacuum with appropriate attachment. Always exercise caution when spot cleaning. Test clean on non-exposed surface. Remove hooks rings & trims before cleaning. Gently vacuum regularly with appropriate attachment. Warm hand wash. Do not bleach. Do not rub or wring. Drip dry in shade. For best results hang curtains by their hooks to damp dry immediately. Use warm iron. Dry cleanable P 50. Possible shrinkage 3%.



warm hand wash



warm iron on
fabric side only



do not tumble dry



do not bleach

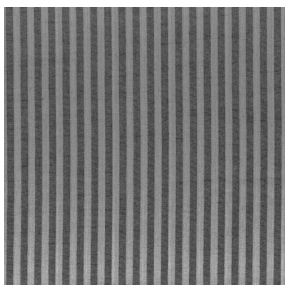


dryclean P50

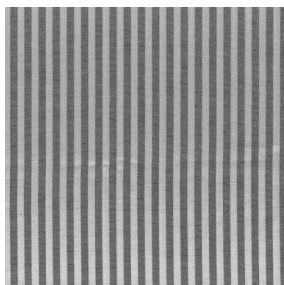
AVAILABLE COLOURS



ALABASTER



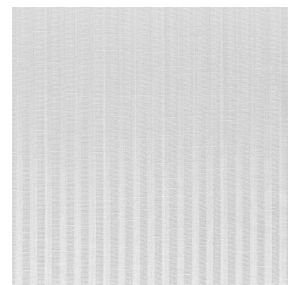
COCOA



COVEN



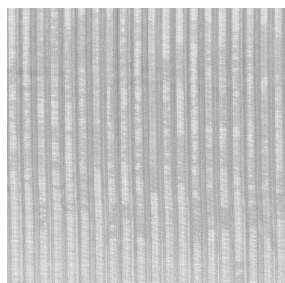
MUSHROOM



PEARL



SAND



SILVER



VELLUM



basfordbrands