

EST 1945

LEWES  
CASTLES COLLECTION

# MAURICE KAIN

DESIGNED IN NEW ZEALAND & AUSTRALIA  
MADE ACROSS THE GLOBE

  
Maurice Kain

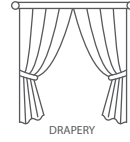




Maurice Kain

# LEWES

JAQUARD DRAPERY FABRIC

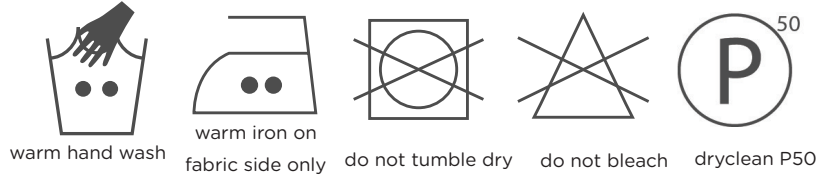


Co-ordinates with Conway, Durham & Rochester as part of the CASTLES collection

<b>COLLECTION NAME</b>	Castles	<b>PATTERN REPEAT</b>	N/A
<b>DESIGN NAME</b>	Lewes	<b>CONTINUOUS</b>	N
<b>BRAND</b>	Maurice Kain	<b>ADDITIONAL FINISHING</b>	N/A
<b>NUMBER OF COLOURS</b>	8	<b>WEIGHT (GSM)</b>	296
<b>FABRIC TYPE</b>	Pattern	<b>ROLL SIZE</b>	40m
<b>USAGE</b>	Curtains	<b>COLOURFASTNESS TO LIGHT</b>	6
<b>COMPOSITION</b>	50% Polyester 50% Cotton	<b>FLAMMABILITY</b>	N

## CARE INSTRUCTIONS

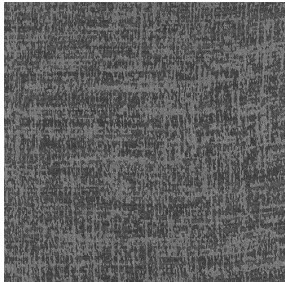
Regular care will minimize need for additional cleaning. Gently vacuum with appropriate attachment. Always exercise caution when spot cleaning. Test clean on non-exposed surface. Remove hooks rings & trims before cleaning. Gently vacuum regularly with appropriate attachment. Warm hand wash. Do not bleach. Do not rub or wring. Drip dry in shade. For best results hang curtains by their hooks to damp dry immediately. Use warm iron. Dry cleanable P 50. Possible shrinkage 3%.



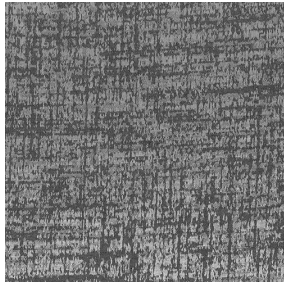
## AVAILABLE COLOURS



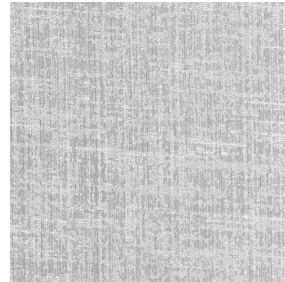
ALABASTER



COCOA



COVEN



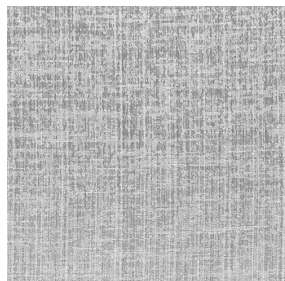
MUSHROOM



PEARL



SAND



SILVER



VELLUM