

EST 1945

CHARLTON

MAURICE KAIN

DESIGNED IN NEW ZEALAND & AUSTRALIA
MADE ACROSS THE GLOBE

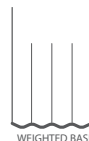
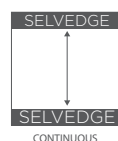




Maurice Kain

CHARLTON

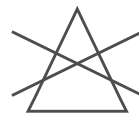
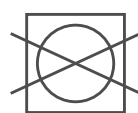
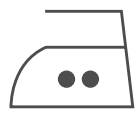
with weighted base
FR WIDE WIDTH STRIPED SHEER
DRAPERY FABRIC



COLLECTION NAME	Charlton	PATTERN REPEAT	84cm RR
DESIGN NAME	Charlton	CONTINUOUS	Y
BRAND	Maurice Kain	ADDITIONAL FINISHING	Base weight
NUMBER OF COLOURS	3	WEIGHT (GSM)	104
FABRIC TYPE	Sheer	ROLL SIZE	40m
USAGE	Curtains	COLOURFASTNESS TO LIGHT	6
COMPOSITION	100% Polyester	FLAMMABILITY	AS/NZS 1530.2 & 3
WIDTH	300cm	ABRASION	N/A

CARE INSTRUCTIONS

Regular care will minimize need for additional cleaning. Gently vacuum with appropriate attachment. Always exercise caution when spot cleaning. Test clean on non-exposed surface. Remove hooks rings & trims before cleaning. Gently vacuum regularly with appropriate attachment. Warm hand wash. Do not bleach. Do not rub or wring. Drip dry in shade. For best results hang curtains by their hooks to damp dry immediately. Use warm iron. Dry cleanable P 50. Possible shrinkage 3%.



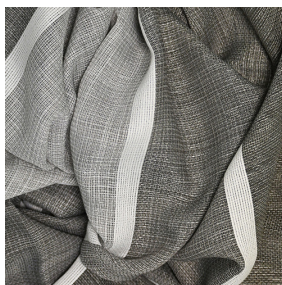
AVAILABLE COLOURS



DOVE



PEBBLE



STONE



basfordbrands