

EST 1945

CHISHOLM

MAURICE KAIN

DESIGNED IN NEW ZEALAND & AUSTRALIA  
MADE ACROSS THE GLOBE

*mk*  
Maurice Kain

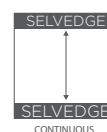
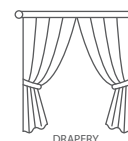




Maurice Kain

# CHISHOLM, with weighted base

FR POLYESTER SHEER DRAPERY FABRIC



|                          |                |                                |                   |
|--------------------------|----------------|--------------------------------|-------------------|
| <b>COLLECTION NAME</b>   | Chisholm       | <b>PATTERN REPEAT</b>          | Nil               |
| <b>DESIGN NAME</b>       | Chisholm       | <b>CONTINUOUS</b>              | Y                 |
| <b>BRAND</b>             | Maurice Kain   | <b>ADDITIONAL FINISHING</b>    | weighted base     |
| <b>NUMBER OF COLOURS</b> | 4              | <b>WEIGHT (GSM)</b>            | 150gsm            |
| <b>FABRIC TYPE</b>       | Pattern        | <b>ROLL SIZE</b>               | 40m               |
| <b>USAGE</b>             | Sheer          | <b>COLOURFASTNESS TO LIGHT</b> | 5                 |
| <b>COMPOSITION</b>       | 100% Polyester | <b>FLAMMABILITY</b>            | AS/NZS 1530.2 & 3 |
| <b>WIDTH</b>             | 310cm          | <b>ABRASION</b>                | N/A               |

## CARE INSTRUCTIONS

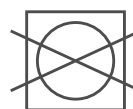
Regular care will minimize need for additional cleaning. Gently vacuum with appropriate attachment. Always Remove hooks rings & trims before cleaning. Gently vacuum regularly with appropriate attachment. Warm hand wash. Do not bleach. Do not rub or wring. Drip dry in shade. For best results hang curtains by their hooks to damp dry immediately. Use warm iron. Dry cleanable P 50. Possible shrinkage 3%.



warm hand wash



warm iron



do not tumble dry



do not bleach

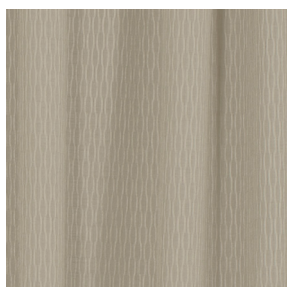


dryclean P50

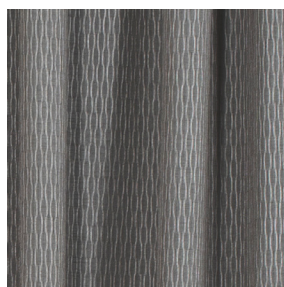
## AVAILABLE COLOURS



BLONDE



LATTE



SLATE



STONE



basfordbrands