

EST 1945

SAVANNA
MAURICE KAIN

DESIGNED IN NEW ZEALAND & AUSTRALIA
MADE ACROSS THE GLOBE

mk
Maurice Kain

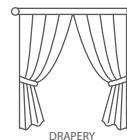




Maurice Kain

SAVANNA

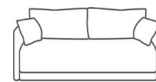
PRINTED COTTON DUAL PURPOSE FABRIC



DRAPERY



CUSHIONS



UPHOLSTERY

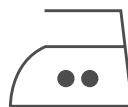
COLLECTION NAME	Abbey & Sherwood	PATTERN REPEAT	Nil
DESIGN NAME	Savanna	CONTINUOUS	N
BRAND	Maurice Kain	ADDITIONAL FINISHING	N/A
NUMBER OF COLOURS	4	WEIGHT (GSM)	370gsm
FABRIC TYPE	Plain	ROLL SIZE	40m
USAGE	Curtains	COLOURFASTNESS TO LIGHT	6
COMPOSITION	100% COTTON	FLAMMABILITY	N
WIDTH	140cm	ABRASION	50,000 MARTINDALE

CARE INSTRUCTIONS

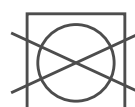
Regular care will minimize need for additional cleaning. Gently vacuum with appropriate attachment. Always exercise caution when spot cleaning. Test clean on non-exposed surface. Remove hooks rings and trims before cleaning. Do not soak, rub or wring. Drip dry in shade. Possible shrinkage 3%



warm hand wash



warm iron



do not tumble dry

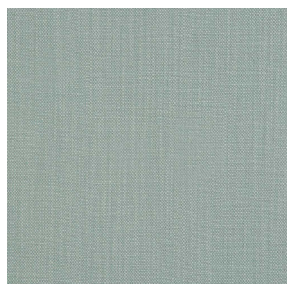


do not bleach

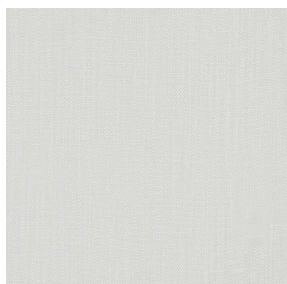


dryclean P50

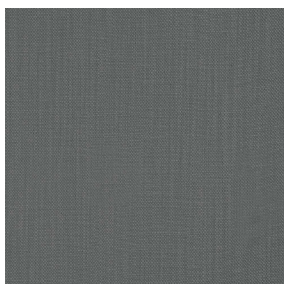
AVAILABLE COLOURS



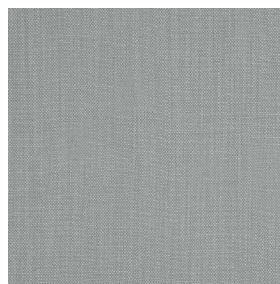
DUCK EGG



NATURAL



PEBBLE



SILVER