

EST 1945

WILLOW  
HARVEST COLLECTION

MAURICE KAIN

DESIGNED IN NEW ZEALAND & AUSTRALIA  
MADE ACROSS THE GLOBE

  
Maurice Kain



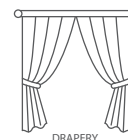


Maurice Kain

# WILLOW

JACQUARD DRAPERY FABRIC

Co-ordinates with Hazel & Oak as part of the Harvest collection



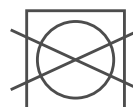
<b>COLLECTION NAME</b>	Harvest Colleccion	<b>PATTERN REPEAT</b>	Nil
<b>DESIGN NAME</b>	Willow	<b>CONTINUOUS</b>	N
<b>BRAND</b>	Maurice Kain	<b>ADDITIONAL FINISHING</b>	N/A
<b>NUMBER OF COLOURS</b>	10	<b>WEIGHT (GSM)</b>	260gsm
<b>FABRIC TYPE</b>	Plain	<b>ROLL SIZE</b>	40m
<b>USAGE</b>	Curtains	<b>COLOURFASTNESS TO LIGHT</b>	5
<b>COMPOSITION</b>	50% POLY/50% COTTON	<b>FLAMMABILITY</b>	N
<b>WIDTH</b>	145cm	<b>ABRASION</b>	N/A

## CARE INSTRUCTIONS

Regular care will minimize need for additional cleaning. Gently vacuum with appropriate attachment. Always exercise caution when spot cleaning. Test clean on non-exposed surface. Remove hooks rings & trims before cleaning. Gently vacuum regularly with appropriate attachment. Warm hand wash. Do not bleach. Do not rub or wring. Drip dry in shade. For best results hang curtains by their hooks to damp dry immediately. Use warm iron. Dry cleanable P 50. Possible shrinkage 3%.



warm iron on  
fabric side only



do not tumble dry

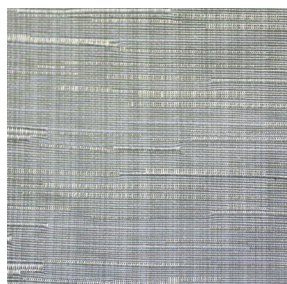


do not bleach

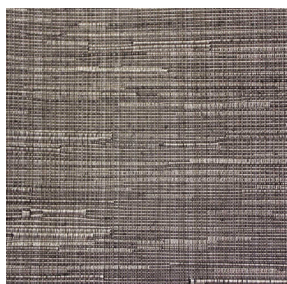


dryclean P50

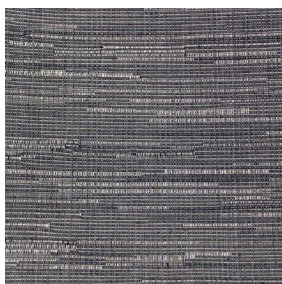
## AVAILABLE COLOURS



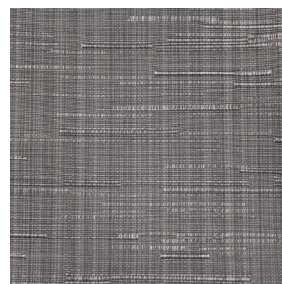
BREEZE



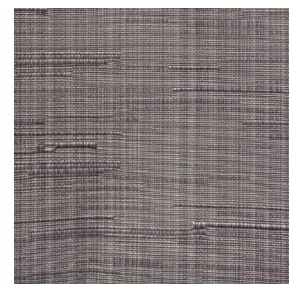
COCOA



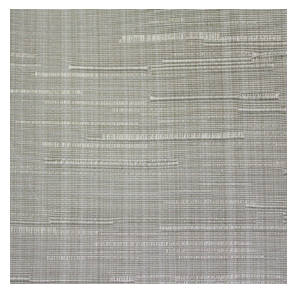
COVEN



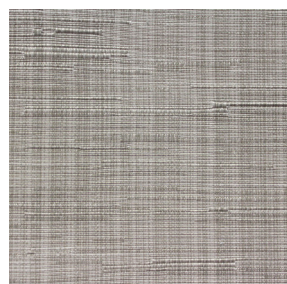
MERCURY



MOON



MOSS



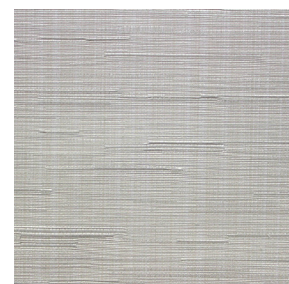
MUSHROOM



PEARL



SAND



VELLUM