

EST 1945

DESERTS COLLECTION
GOBI

MAURICE KAIN

DESIGNED IN NEW ZEALAND & AUSTRALIA
MADE ACROSS THE GLOBE

mk
Maurice Kain



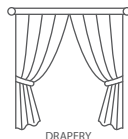


Maurice Kain

GOBI

RECYCLED POLYESTER DRAPERY FABRIC

Co-ordinates with Kalahari, Mojave & Tanami as part of the DESERTS Collection



DRAPERY



CUSHIONS



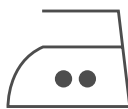
COLLECTION NAME	Deserts Collection	PATTERN REPEAT	Nil
DESIGN NAME	Gobi	CONTINUOUS	N
BRAND	Maurice Kain	ADDITIONAL FINISHING	n/a
NUMBER OF COLOURS	5	WEIGHT (GSM)	222gsm
FABRIC TYPE	Plain	ROLL SIZE	40m
USAGE	Curtain	COLOURFASTNESS TO LIGHT	6
COMPOSITION	100% Recycled Polyester	FLAMMABILITY	AS/NZS 1530.2 & 1530.3
WIDTH	140cm	ABRASION	N/A

CARE INSTRUCTIONS

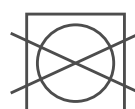
Regular care will minimize need for additional cleaning. Gently vacuum with appropriate attachment. Always exercise caution when spot cleaning. Test clean on non-exposed surface. Remove hooks rings and trims before cleaning. Do not soak, rub or wring. Drip dry in shade. Possible shrinkage 3%



warm hand wash



warm iron



do not tumble dry



do not bleach



dryclean P50

AVAILABLE COLOURS



NATURAL



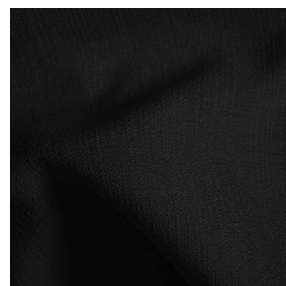
CHALK



CLOUD



SLATE



CHARCOAL