

EST 1945

TAYALLA

MAURICE KAIN

DESIGNED IN NEW ZEALAND & AUSTRALIA
MADE ACROSS THE GLOBE

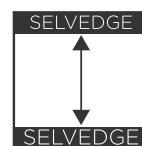
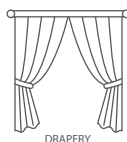




Maurice Kain

TAYALLA

WIDE WIDTH PLAIN CURTAIN FABRIC



| | | | |
|--------------------------|----------------|--------------------------------|---------------|
| COLLECTION NAME | Tayalla | PATTERN REPEAT | Nil |
| DESIGN NAME | Tayalla | CONTINUOUS | Y |
| BRAND | Maurice Kain | ADDITIONAL FINISHING | N/A |
| NUMBER OF COLOURS | 17 | WEIGHT (GSM) | 250 |
| FABRIC TYPE | Plain | ROLL SIZE | 40m |
| USAGE | Curtains | COLOURFASTNESS TO LIGHT | 6-7 |
| COMPOSITION | 100% POLYESTER | FLAMMABILITY | AS/NZS 1530.3 |
| WIDTH | 295cm | ABRASION | N/A |

CARE INSTRUCTIONS

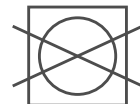
Regular care will minimize need for additional cleaning. Gently vacuum with appropriate attachment. Always exercise caution when spot cleaning. Test clean on non-exposed surface. Remove hooks rings & trims before cleaning. Gently vacuum regularly with appropriate attachment. Warm hand wash. Do not bleach. Do not rub or wring. Drip dry in shade. For best results hang curtains by their hooks to damp dry immediately. Use warm iron. Dry clean only P 50 Possible shrinkage 3%



warm hand wash



warm iron



do not tumble dry



do not bleach



dryclean P50

AVAILABLE COLOURS



ALABASTER



PARCHMENT



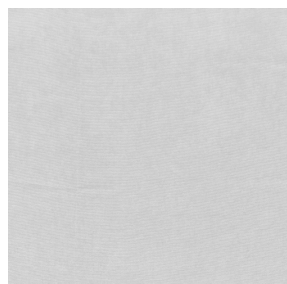
SAND



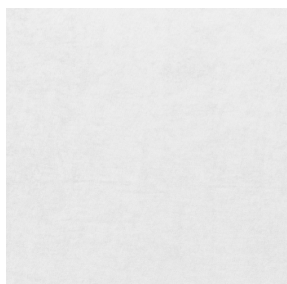
MARBLE



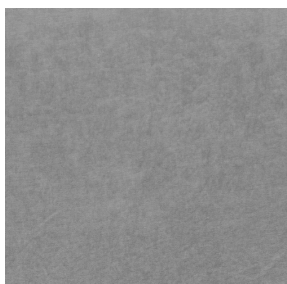
STONE



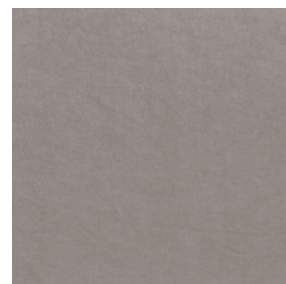
BIRCH



SNOW



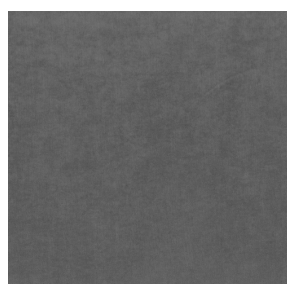
SLATE



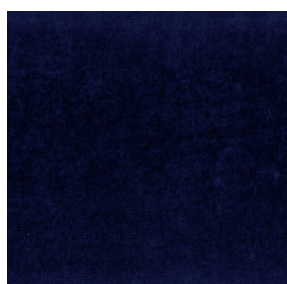
MINK



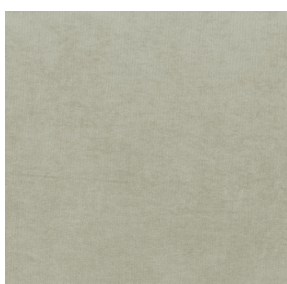
CINDER



CHARCOAL



NAVY



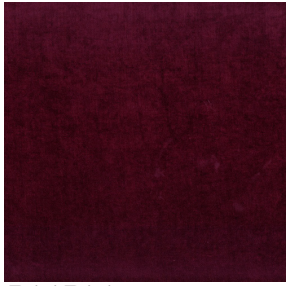
PEBBLE



DUCK EGG



POWDER



RUBY



PEACOCK