

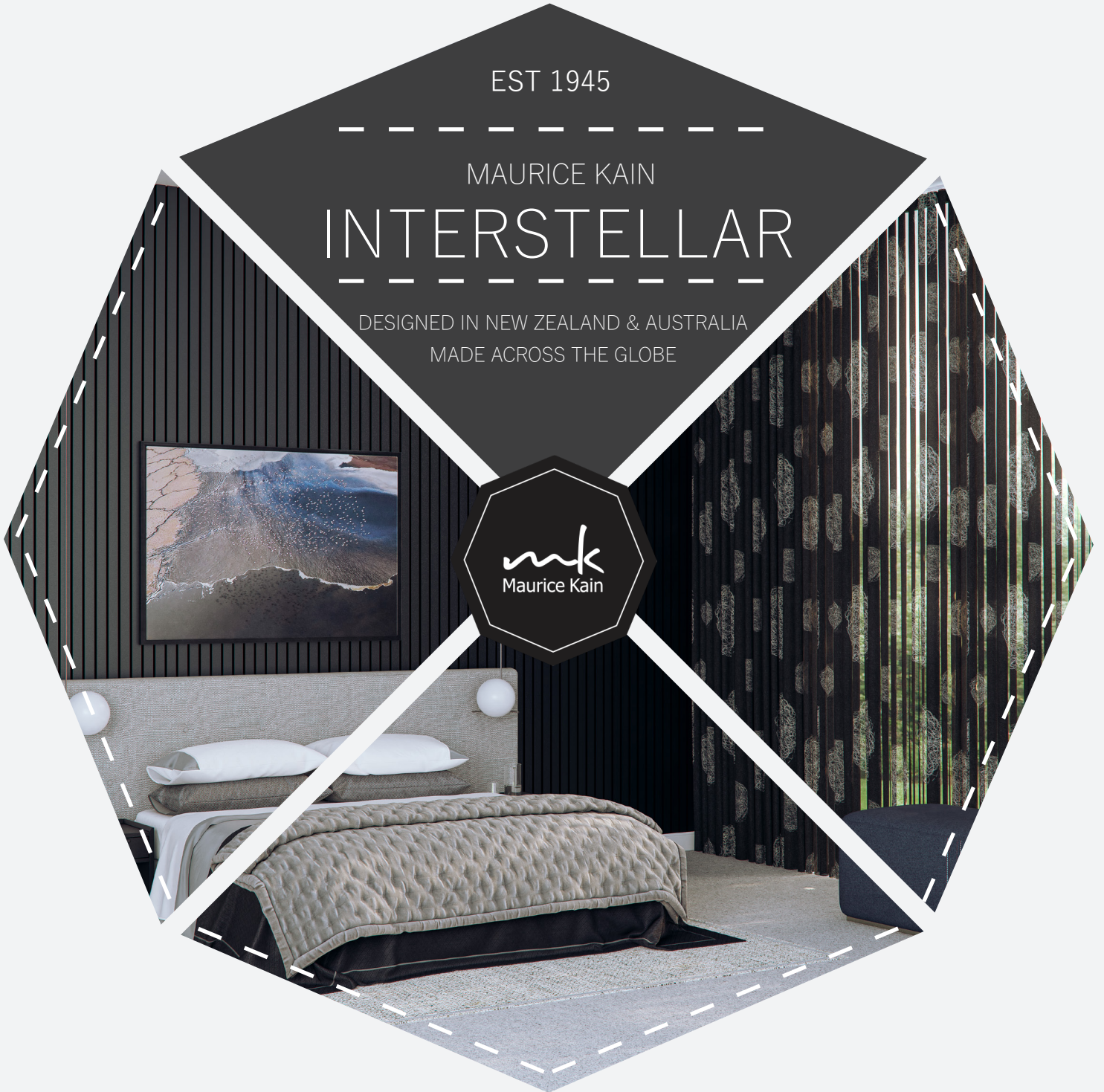
EST 1945

MAURICE KAIN

INTERSTELLAR

DESIGNED IN NEW ZEALAND & AUSTRALIA
MADE ACROSS THE GLOBE

mk
Maurice Kain



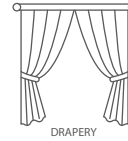


Maurice Kain

INTERSTELLAR

with weighted base

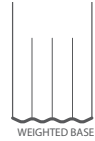
EMBROIDERED WIDE WIDTH SHEER DRAPERY



DRAPERY



CONTINUOUS



WEIGHTED BASE



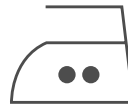
COLLECTION NAME	Interstellar	PATTERN REPEAT	81cm railroaded
DESIGN NAME	Interstellar	CONTINUOUS	Y
BRAND	Maurice Kain	ADDITIONAL FINISHING	weighted base
NUMBER OF COLOURS	6	WEIGHT (GSM)	80
FABRIC TYPE	sheer	ROLL SIZE	40m
USAGE	Curtains	COLOURFASTNESS TO LIGHT	6
COMPOSITION	100% Polyester	FLAMMABILITY	AS/NZS 1530.2 & 3
WIDTH	320cm	ABRASION	N/A

CARE INSTRUCTIONS

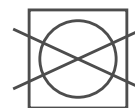
Regular care will minimize need for additional cleaning. Gently vacuum with appropriate attachment. Always exercise caution when spot cleaning. Test clean on non-exposed surface. Remove hooks rings & trims before cleaning. Gently vacuum regularly with appropriate attachment. Warm hand wash. Do not bleach. Do not rub or wring. Drip dry in shade. For best results hang curtains by their hooks to damp dry immediately. Use warm iron. Dry cleanable P 50. Possible shrinkage 3%.



warm hand wash



warm iron on
fabric side only



do not tumble dry



do not bleach



dryclean P50

AVAILABLE COLOURS



MARBLE



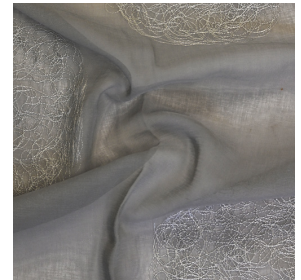
SNOW



DOMINO



SHADOW



ASH



SKY