

FOUR FAMILIES

RE-ESTABLISHED 2014



NISHI

blockout blind fabric



WIDTH
300 cm

AUSTRALIAN DESIGNED

100%



COMPOSITION:	<i>100% polyester</i>
WIDTH:	<i>300cm</i>
ROLL LENGTH:	<i>20-25m rolls</i>
WEIGHT:	<i>460gsm +/- 10%</i>
THICKNESS:	<i>0.77mm</i>
FIRE CLASSIFICATION:	<i>tested to AS/NZS 1530. 3</i>
CERTIFICATION:	<i>OEKO-TEX Standard 100 Confidence In Textiles</i>

Suitable for roller blinds, roman blinds & panel glides.





a division of
basfordbrands
www.basfordbrands.com

AVAILABLE COLOURS



SNOW



CHALK



LINEN



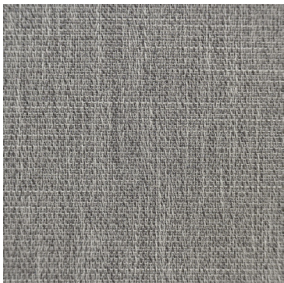
ASH



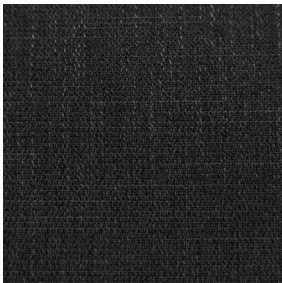
STONE



CLOUD



SILVER



CHARCOAL

TAKING CARE

Cleaning your blind fabric is essential, not only to remove surface dust and stains but it will also increase the longevity of your blinds. Use a feather duster or a vacuum, set on low with an appropriate attachment. Always exercise caution when spot cleaning. Use a clean, lint-free cloth or sponge and dip it in warm water. Dry gently with a clean towel. Always make sure to test any cleaning product on a small, discreet section of the fabric. Chemicals will permanently damage your fabric.

FOUR FAMILIES

RE-ESTABLISHED 2014



All the Four Families fabrics have a light fastness score of at least 6 on the blue scale (ISO 105-B02: 1994), which ensures that the colours will stay vibrant for many years to come. Colours may vary slightly from one production batch to another. Variations are within industry standard (Delta E reading $1 \leq$). Please always check the colour before cutting.