

BOND

RE-ESTABLISHED 2014

**FOUR FAMILIES**

*blind fabric craftsmanship*



DESIGNED IN NEW ZEALAND & AUSTRALIA  
MADE ACROSS THE GLOBE

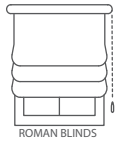
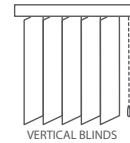
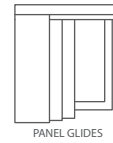
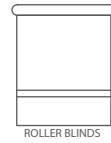




# BOND

BONDED BLOCKOUT BLIND FABRIC

fabric texture is the same front and back

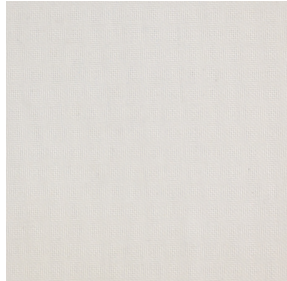


<b>DESIGN NAME</b>	Bond	<b>WEIGHT (GSM)</b>	Ice & Chalk 370
<b>BRAND</b>	FOUR FAMILIES		all other colours 320
<b>NUMBER OF COLOURS</b>	8	<b>THICKNESS</b>	Ice & Chalk 0.65mm
<b>USAGE</b>	BLIND FABRIC		all other colours 0.6mm
<b>COMPOSITION</b>	100% POLYESTER	<b>ROLL SIZE</b>	20-25m
<b>WIDTH</b>	300cm, 127mm, 89mm	<b>CERTIFICATION</b>	Oeko Tex Standard 100
<b>COLOURFASTNESS TO LIGHT</b>	7	<b>FLAMMABILITY</b>	AS/NZS 1530.3
<b>ADDITIONAL FINISHING</b>	BONDED		complies with Building Code of Australia requirements for Class 2 to 9(a) buildings

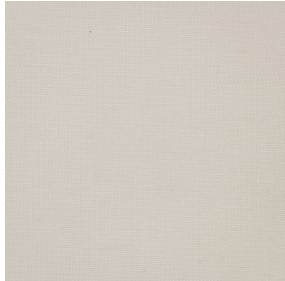
## CARE INSTRUCTIONS

*Cleaning your blind fabric is essential, not only to remove surface dust and stains, but it will also increase the longevity of your blinds. Use a feather duster, or a vacuum set on low with an appropriate attachment. Always exercise caution when spot cleaning. Use a clean, lint-free cloth or sponge and dip it in warm water. Dry gently with a clean towel. Always make sure to test any cleaning product on a small, discreet section of the fabric. Chemicals will permanently damage your fabric.*

## AVAILABLE COLOURS



ICE



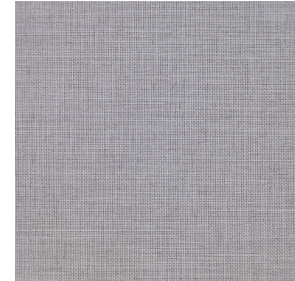
CHALK



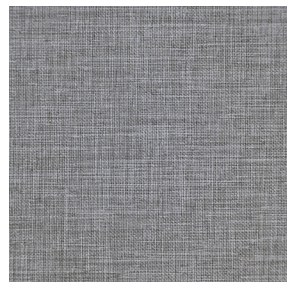
LINEN



TAUPE



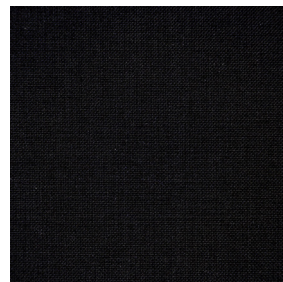
CLOUD



CONCRETE



GRANITE



CHARCOAL

