

SB-WOOLAMAI

RE-ESTABLISHED 2014

FOUR FAMILIES

blind fabric craftsmanship



DESIGNED IN NEW ZEALAND & AUSTRALIA
MADE ACROSS THE GLOBE



RECYCLED CONTENT



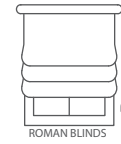


SB-WOOLAMAI

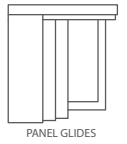
RECYCLED POLYESTER
SHEER BLIND FABRIC



ROLLER BLINDS



ROMAN BLINDS



PANEL GLIDES

DESIGN NAME	SB-Woolamai	ADDITIONAL FINISHING	acrylic stiffening
BRAND	Four Families	WEIGHT (GSM) +/- 10%	100gsm
NUMBER OF COLOURS	8	THICKNESS +/-0.5mm	0.2mm
FABRIC TYPE	sheer	ROLL SIZE	20-25m
USAGE	Blind Fabric	COLOURFASTNESS TO LIGHT	6
COMPOSITION	100% Polyester, 60% Recycled Polyester	CERTIFICATION	Oeko Tex Standard 100
FEATURE	PVC Free	FLAMMABILITY	AS/NZS 1530.2 & 1530.3
WIDTH	300cm	complies with Building Code of Australia requirements for Class 2 to 9(a) buildings	

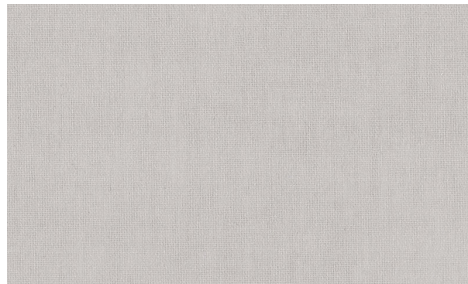
CARE INSTRUCTIONS

Cleaning your blind fabric is essential, not only to remove surface dust and stains, but it will also increase the longevity of your blinds. Use a feather duster, or a vacuum set on low with an appropriate attachment. Always exercise caution when spot cleaning. Use a clean, lint-free cloth or sponge and dip it in warm water. Dry gently with a clean towel. Always make sure to test any cleaning product on a small, discreet section of the fabric. Chemicals will permanently damage your fabric.

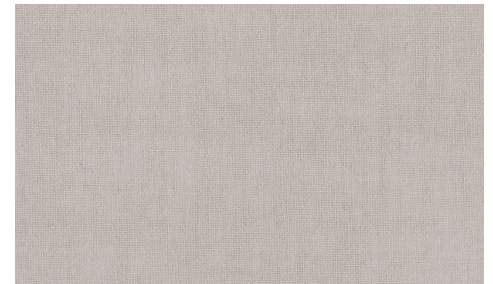
AVAILABLE COLOURS



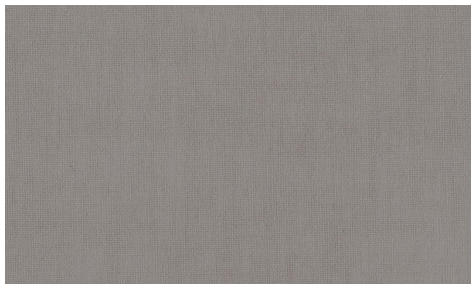
CLOUD



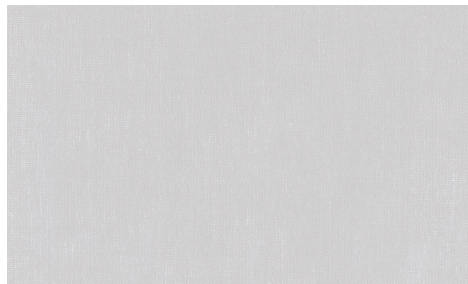
SAND



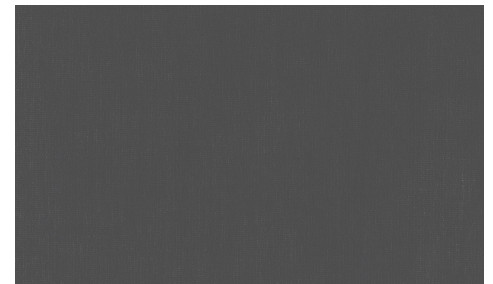
DRIFTWOOD



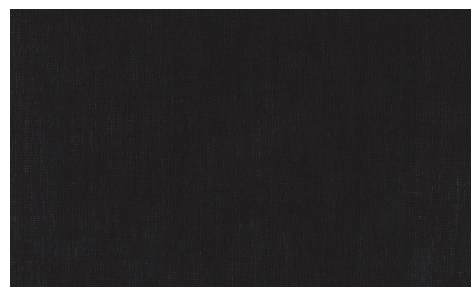
STONE



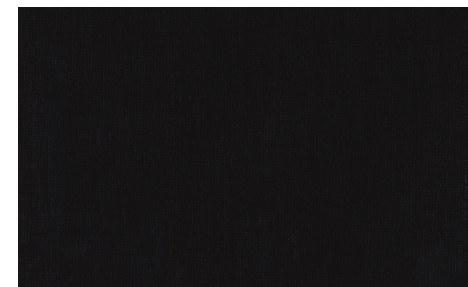
SILVER



STORM



BASALT



ONYX



basfordbrands