

EST 1945

DARWIN COLLECTION
SANTA CRUZ

MAURICE KAIN

DESIGNED IN NEW ZEALAND & AUSTRALIA
MADE ACROSS THE GLOBE


Maurice Kain

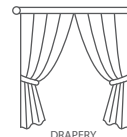




Maurice Kain

SANTA CRUZ

UNCOATED DRAPERY FABRIC

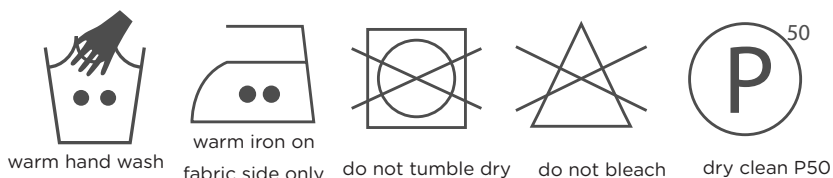


Co-ordinates with EVOLUTION as part of the Darwin Collection

COLLECTION NAME	Darwin	PATTERN REPEAT	47.5cm
DESIGN NAME	Santa Cruz	CONTINUOUS	Y
BRAND	MAURICE KAIN	ADDITIONAL FINISHING	/
NUMBER OF COLOURS	8	WEIGHT (GSM)	245gsm
FABRIC TYPE	PATTERN	ROLL SIZE	40m
USAGE	CURTAINS	COLOURFASTNESS TO LIGHT	6
COMPOSITION	61% POLY/39% COTTON	FLAMMABILITY	N
WIDTH	143cm	ABRASION	N/A

CARE INSTRUCTIONS

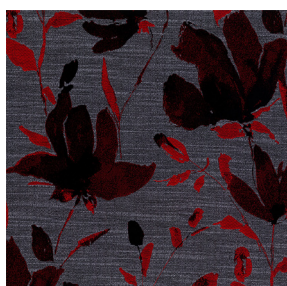
Regular care will minimize need for additional cleaning. Gently vacuum with appropriate attachment. Always exercise caution when spot cleaning. Test clean on non-exposed surface. Remove hooks rings and trims before cleaning. Do not soak, rub or wring. Drip dry in shade. Possible shrinkage 3%



AVAILABLE COLOURS



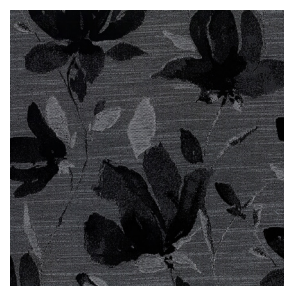
CHARCOAL



EMBER



MARBLE



NERO



OYSTER



SEAFOAM



SILVER



TURMERIC