

EST 1945

PILBARA

# MAURICE KAIN

DESIGNED IN NEW ZEALAND & AUSTRALIA  
MADE ACROSS THE GLOBE



Maurice Kain



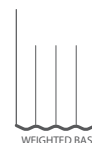
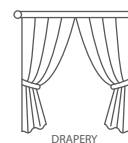


Maurice Kain



# PILBARA, with weighted base

POLYESTER LINEN SHEER DRAPERY FABRIC



<b>COLLECTION NAME</b>	Pilbara	<b>WIDTH</b>	300cm
<b>DESIGN NAME</b>	Pilbara	<b>PATTERN REPEAT</b>	Nil
<b>BRAND</b>	Maurice Kain	<b>CONTINUOUS</b>	Y
<b>NUMBER OF COLOURS</b>	12	<b>WEIGHT (GSM)</b>	99
<b>FABRIC TYPE</b>	Sheer	<b>ROLL SIZE</b>	40m
<b>USAGE</b>	Curtains	<b>COLOURFASTNESS TO LIGHT</b>	6
<b>COMPOSITION</b>	89% Polyester 11% Linen	<b>CERTIFICATION</b>	Oeko-Tex Standard
<b>TESTED TO</b>	AS/NZS 1530.2 & 3		100

## CARE INSTRUCTIONS

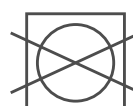
Regular care will minimize need for additional cleaning. Gently vacuum with appropriate attachment. Always Remove hooks rings & trims before cleaning. Gently vacuum regularly with appropriate attachment. Warm hand wash. Do not bleach. Do not rub or wring. Drip dry in shade. For best results hang curtains by their hooks to damp dry immediately. Use warm iron. Dry cleanable P 50. Possible shrinkage 3%.



warm hand wash



warm iron



do not tumble dry



do not bleach

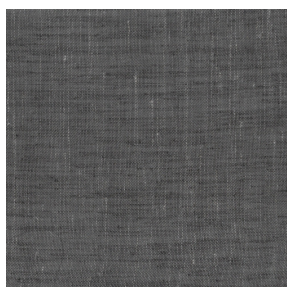


dryclean P50

## AVAILABLE COLOURS



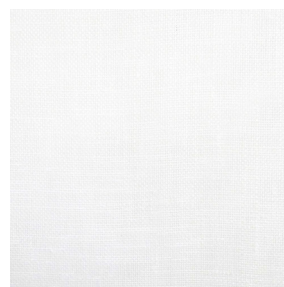
BRONZE



FLINT



GRANITE



ICE



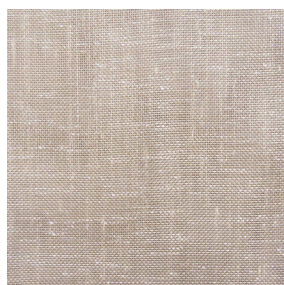
LINEN



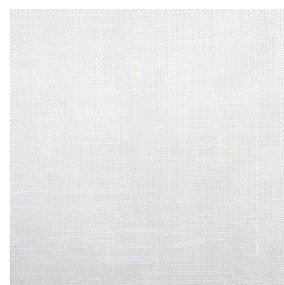
MARBLE



PARCHMENT



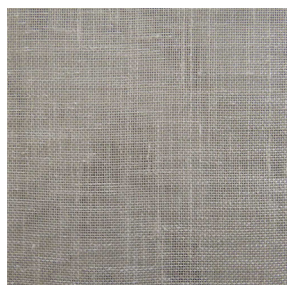
PEBBLE



QUARTZ



STONE



TAUPE



VOLCANIC