

EST 1945

SOUTHPORT 330

# MAURICE KAIN

DESIGNED IN NEW ZEALAND & AUSTRALIA  
MADE ACROSS THE GLOBE





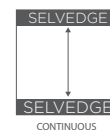
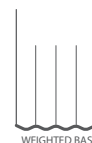
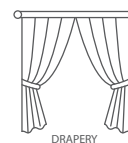
Maurice Kain



# SOUTHPORT 330

with weighted base

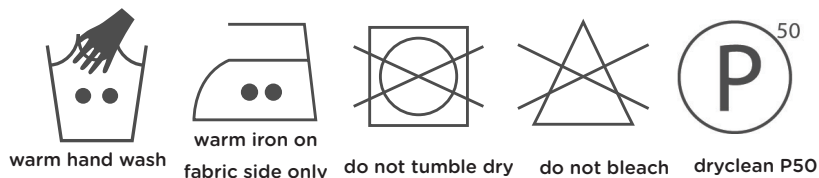
FR WIDE WIDTH SHEER DRAPERY FABRIC



<b>COLLECTION NAME</b>	Southport 330	<b>PATTERN REPEAT</b>	Nil
<b>DESIGN NAME</b>	Southport 330	<b>CONTINUOUS</b>	Y
<b>BRAND</b>	Maurice Kain	<b>ADDITIONAL FINISHING</b>	N/A
<b>NUMBER OF COLOURS</b>	32	<b>WEIGHT (GSM)</b>	78
<b>FABRIC TYPE</b>	Sheer	<b>ROLL SIZE</b>	40m
<b>USAGE</b>	Curtains	<b>COLOURFASTNESS TO LIGHT</b>	6
<b>COMPOSITION</b>	100% Polyester	<b>FLAMMABILITY</b>	AS/NZS 1530.2 & 3
<b>WIDTH</b>	330cm	<b>ABRASION</b>	N/A

## CARE INSTRUCTIONS

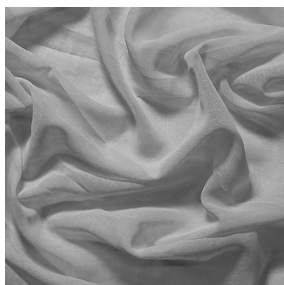
Regular care will minimize need for additional cleaning. Gently vacuum with appropriate attachment. Always exercise caution when spot cleaning. Test clean on non-exposed surface. Remove hooks rings & trims before cleaning. Gently vacuum regularly with appropriate attachment. Warm hand wash. Do not bleach. Do not rub or wring. Drip dry in shade. For best results hang curtains by their hooks to damp dry immediately. Use warm iron. Dry cleanable P 50. Possible shrinkage 3%.



## AVAILABLE COLOURS



ARCTIC



ICE



CREAM



IVORY



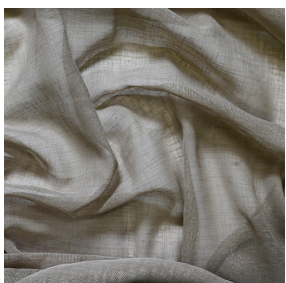
PORCELAIN



MERINO



NATURAL



HUSK



BIRCH



LINEN



TEA



PUTTY



STONE



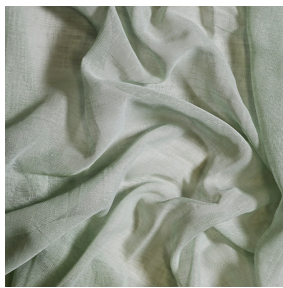
SIENNA



PETAL



**BLUSH**



**DUCK EGG**



**BOUNTY**



**CUMULUS**



**SPRAY**



**ADRIATIC**



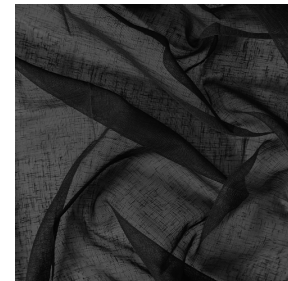
**TEAL**



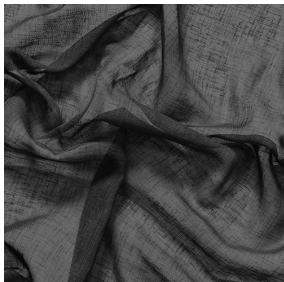
**FOREST**



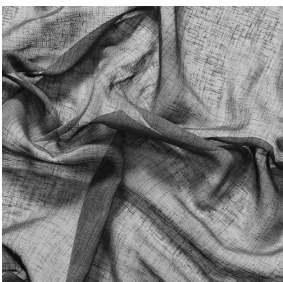
**NAVY**



**BLACKJACK**



**BALTIC SEA**



**IRON**



**SEAL**



**STORM**



**DUSK**



**ASH**



**FOG**