

EST 1945

MIZUMI

# MAURICE KAIN

DESIGNED IN NEW ZEALAND & AUSTRALIA  
MADE ACROSS THE GLOBE

  
Maurice Kain



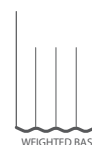
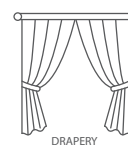


Maurice Kain



# MIZUMI, with weighted base

## POLYESTER SHEER DRAPERY FABRIC



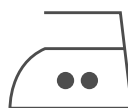
<b>COLLECTION NAME</b>	Mizumi	<b>WIDTH</b>	315cm
<b>DESIGN NAME</b>	Mizumi	<b>PATTERN REPEAT</b>	Nil
<b>BRAND</b>	Maurice Kain	<b>CONTINUOUS</b>	Y
<b>NUMBER OF COLOURS</b>	8	<b>WEIGHT (GSM)</b>	330
<b>FABRIC TYPE</b>	Sheer	<b>ROLL SIZE</b>	25-30m
<b>USAGE</b>	Curtains	<b>COLOURFASTNESS TO LIGHT</b>	6
<b>COMPOSITION</b>	100% Polyester	<b>CERTIFICATION</b>	Oeko-Tex Standard 100
<b>TESTED TO</b>	AS/NZS 1530.3		

### CARE INSTRUCTIONS

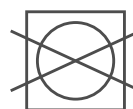
Regular care will minimize need for additional cleaning. Gently vacuum with appropriate attachment. Always Remove hooks rings & trims before cleaning. Gently vacuum regularly with appropriate attachment. Warm hand wash. Do not bleach. Do not rub or wring. Drip dry in shade. For best results hang curtains by their hooks to damp dry immediately. Use warm iron. Dry cleanable P 50. Possible shrinkage 3%.



warm hand wash



warm iron



do not tumble dry



do not bleach



dryclean P50

### AVAILABLE COLOURS



WHITE



IVORY



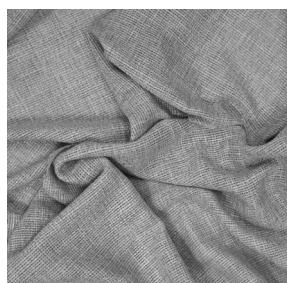
CLOUD



ASH



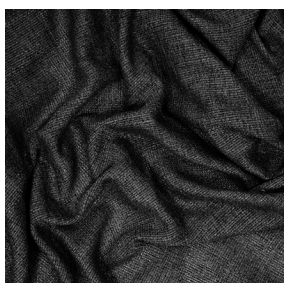
NATURAL



MARBLE



GRANITE



SLATE