

EST 1945

MAURITIUS

MAURICE KAIN

DESIGNED IN NEW ZEALAND & AUSTRALIA
MADE ACROSS THE GLOBE


Maurice Kain



Fabric Specifications

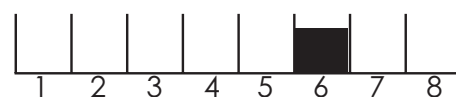
MAURITIUS recycled

10 COLOURS	Ice, Chalk, Linen, Flint, Silver, Stone, Pebble, Driftwood, Marble, Granite
FABRIC TYPE	sheer
COMPOSITION	18% Recycled Polyester, 79% Polyester, 2% Linen
WIDTH	325cm
CONTINUOUS	Y
BASE WEIGHT	Y
PATTERN REPEAT	Nil
WEIGHT	105gsm
ROLL SIZE	40m
USE	drapery
COUNTRY OF ORIGIN	EU

This fabric meets Australian & New Zealand Textile Standards for: Drapery 2663.1.1997 -- Category: 3 High Performance

TEST RESULTS

TESTED TO AS/NZS 1530.2	Y
FLAMMABILITY INDEX	2
SPREAD FACTOR	L:1 W:1
HEAT FACTOR	L:1 W:1
TESTED TO AS/NZS 1530.3	Y
IGNITABILITY INDEX	0 (range 0-20)
SPREAD OF FLAME INDEX	0 (range 0-10)
HEAT EVOLVED INDEX	0 (range 0-10)
SMOKE DEVELOPED INDEX	0-1 (range 0-10)
MARTINDALE	n/a
COLOURFASTNESS TO LIGHT	6 using blue scales AS2001.4.21-2006



Complies with Building Code of Australia requirements for Class 2 to 9(a) buildings

Care Code 4 -For use on polyester/cotton, polyester mixture & polyester fabrics, woven or knitted.

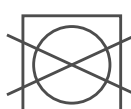
Remove hooks rings & trims before cleaning. Gently vacuum regularly with appropriate attachment. Warm hand wash. Do not bleach. Do not rub or wring. Do not tumble dry after washing. Drip dry in shade for best results hang curtains by their hooks to damp dry and rehang immediately. Use warm iron if required. Dry cleanable P 50. Possible shrinkage 3%.



warm hand wash



warm iron



do not tumble dry



do not bleach



dryclean P50



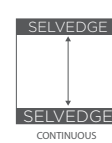
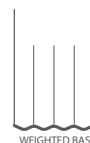
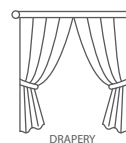
FIRE RETARDANT
TESTED

Guarantee: 3 Years in accordance with our fabric type and care instructions

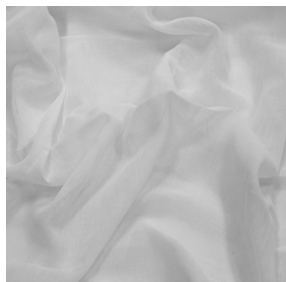


Maurice Kain

MAURITIUS, with weighted base



AVAILABLE IN 10 COLOURS



ICE



CHALK



LINEN



FLINT



SILVER



STONE



PEBBLE



DRIFTWOOD



MARBLE



GRANITE