

EST 1945

ALTAIR

MAURICE KAIN

DESIGNED IN NEW ZEALAND & AUSTRALIA
MADE ACROSS THE GLOBE


Maurice Kain



Fabric Specifications

ALTAIR

10 COLOURS	Dove, Ivory, Marble, Mineral, Pearl, Pewter, Silver, Sky, Slate, Smoke
FABRIC TYPE	sheer
COMPOSITION	100% Acrylic
WIDTH	310cm
CONTINUOUS	Y
BASE WEIGHT	Y
PATTERN REPEAT	Nil
WEIGHT	82gsm
ROLL SIZE	40m
USE	drapery
COUNTRY OF ORIGIN	EU

This fabric meets Australian & New Zealand Textile Standards for: Drapery 2663.1.1997 -- Category: 3 High Performance

TEST RESULTS

TESTED TO AS/NZS 1530.2	Y
FLAMMABILITY INDEX	62
SPREAD FACTOR	L:40 W:40
HEAT FACTOR	L:14 W:14
TESTED TO AS/NZS 1530.3	Y
IGNITABILITY INDEX	0 (range 0-20)
SPREAD OF FLAME INDEX	0 (range 0-10)
HEAT EVOLVED INDEX	0 (range 0-10)
SMOKE DEVELOPED INDEX	3 (range 0-10)
MARTINDALE	n/a
COLOURFASTNESS TO LIGHT	6 using blue scales AS2001.4.21-2006

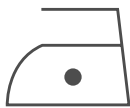
Complies with Building Code of Australia requirements for Class 2 to 9(a) buildings

Care Code 5 -For use on acrylic and modacrylic fabrics

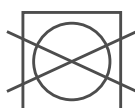
Remove hooks rings & trims before cleaning. Gently vacuum regularly with appropriate attachment. Warm hand wash. Do not bleach. Do not rub or wring. Do not tumble dry after washing. Drip dry in shade for best results hang curtains by their hooks to damp dry and rehang immediately. Cool iron if required. Do not steam iron. Dry cleanable P 50. No steam pressing. Possible shrinkage 3%.



warm hand wash



cool iron



do not tumble dry



do not bleach



dryclean P50



**STANDARD
100**



**FIRE RETARDANT
TESTED**

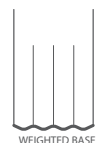
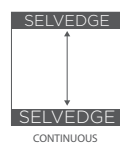
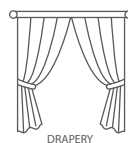
Guarantee: 3 Years in accordance with our fabric type and care instructions



Maurice Kain

ALTAIR

FIRE RETARDANT WIDE WIDTH SHEER
DRAPERY FABRIC



AVAILABLE COLOURS



DOVE



IVORY



MARBLE



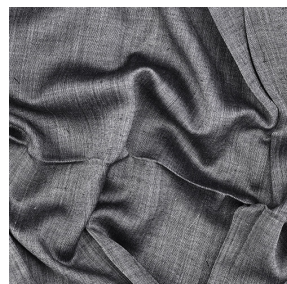
MINERAL



PEARL



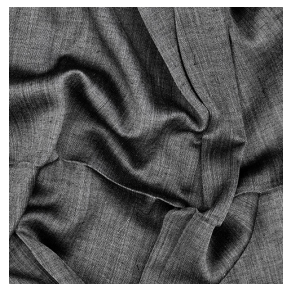
PEWTER



SILVER



SKY



SLATE



SMOKE