

EST 1945

BLOOMING
PARADISE TRIPLE WEAVE COLLECTION
MAURICE KAIN

DESIGNED IN NEW ZEALAND & AUSTRALIA

MADE ACROSS THE GLOBE


Maurice Kain



Fabric Specifications

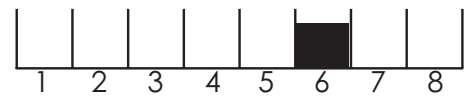
BLOOMING

2 COLOURS	Spring, Summer
FABRIC TYPE	triple weave
COMPOSITION	100% Polyester
WIDTH	300cm (296cm useable)
CONTINUOUS	Y
BASE WEIGHT	N
PATTERN REPEAT	V:90cm H: 90cm railroaded
WEIGHT	296gsm
ROLL SIZE	20-25m
USE	drapery
COUNTRY OF ORIGIN	Non EU

This fabric meets Australian & New Zealand Textile Standards for: Drapery 2663.1.1997 -- Category: 3 High Performance

TEST RESULTS

TESTED TO AS/NZS 1530.2	Y
FLAMMABILITY INDEX	20
SPREAD FACTOR	L:18 W:1
HEAT FACTOR	L:2 W:1
TESTED TO AS/NZS 1530.3	Y
IGNITABILITY INDEX	0 (range 0-20)
SPREAD OF FLAME INDEX	0 (range 0-10)
HEAT EVOLVED INDEX	0 (range 0-10)
SMOKE DEVELOPED INDEX	1 (range 0-10)
MARTINDALE	n/a
COLOURFASTNESS TO LIGHT	6 using blue scales AS2001.4.21-2006



Complies with Building Code of Australia requirements for Class 2 to 9(a) buildings

Care Code 4 -For use on polyester/cotton, polyester mixture & polyester fabrics, woven or knitted.

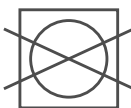
Remove hooks rings & trims before cleaning. Gently vacuum regularly with appropriate attachment. Warm hand wash. Do not bleach. Do not rub or wring. Do not tumble dry after washing. Drip dry in shade for best results hang curtains by their hooks to damp dry and rehang immediately. Use warm iron if required. Dry cleanable P 50. Possible shrinkage 3%.



warm hand wash



warm iron



do not tumble dry



do not bleach



dryclean P50



FIRE RETARDANT
TESTED

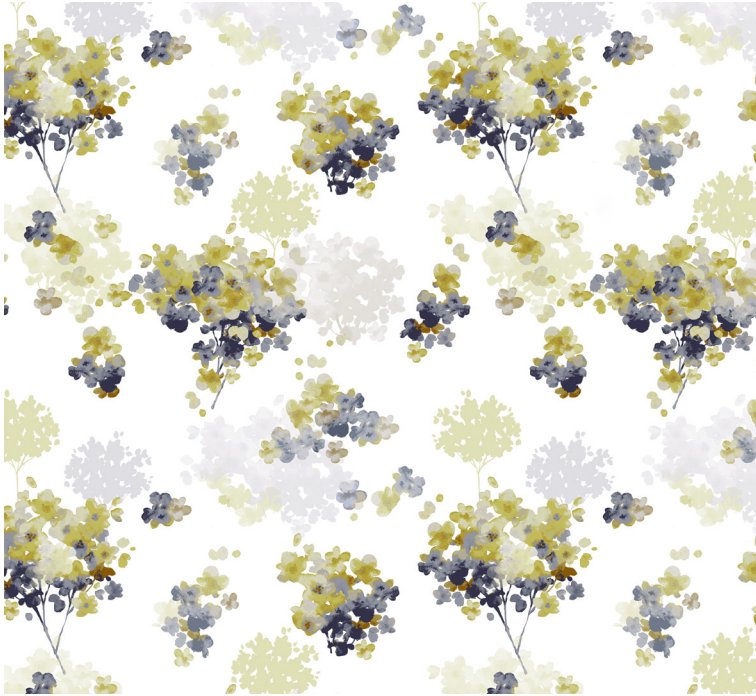
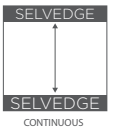
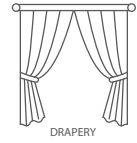
Guarantee: 3 Years in accordance with our fabric type and care instructions



Maurice Kain

BLOOMING

AVAILABLE IN 2 COLOURS



SPRING



SUMMER