

EST 1945

HUDSON COLLECTION
FINLEY STRIPE

MAURICE KAIN


DESIGNED IN NEW ZEALAND & AUSTRALIA
MADE ACROSS THE GLOBE


Maurice Kain



Fabric Specifications

FINLEY STRIPE

12 COLOURS	Snow, Pearl, Ivory, Camellia, Antique, Mushroom, Stone, Silver, Pewter, Charcoal, Spray, Celadon
FABRIC TYPE	blockout
COMPOSITION	100% Polyester, silicone blockout coating
WIDTH	300cm
CONTINUOUS	Y
BASE WEIGHT	N
PATTERN REPEAT	39.4cm railroaded
WEIGHT	335gsm
ROLL SIZE	25m
USE	drapery
COUNTRY OF ORIGIN	NON EU
COLOURFASTNESS TO LIGHT	7 using blue scales AS2001.4.21-2006 

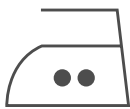
This fabric meets Australian & New Zealand Textile Standards for: Drapery 2663.1.1997 -- Category: 3 High Performance

Care Code 11 -For use on washable coated fabrics

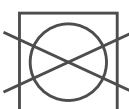
Regular care will minimise the need for additional cleaning. Gently vacuum with appropriate attachment. Always exercise caution when spot cleaning. Test clean on non-exposed surface. Avoid excessive rubbing and abrasion. Remove hooks rings and trims before cleaning. Washing: Curtains are heavy when wet. Fabric is tested for 5 wash cycles in a domestic washing machine in cool to warm water (max 40o C). Mild detergents such as wool mixes are recommended. Do not bleach, soak, rub or wring. Drip dry in shade. Do not tumble dry. Hang curtains by their hooks to avoid coated sides touching. Do not use pegs. Do not fold curtains over clothes lines. Do not iron/press coated sides. Warm iron/press on fabric side only. Possible shrinkage 3%.



machine
washable



warm iron



do not tumble dry



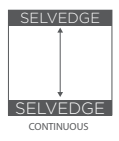
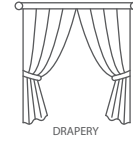
do not bleach

Guarantee: 3 Years in accordance with our fabric type and care instructions



Maurice Kain

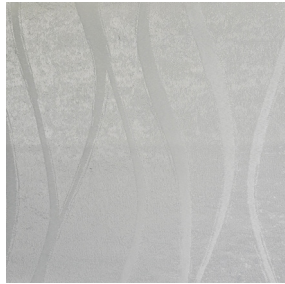
HUDSON COLLECTION FINLEY STRIPE



AVAILABLE IN 12 COLOURS



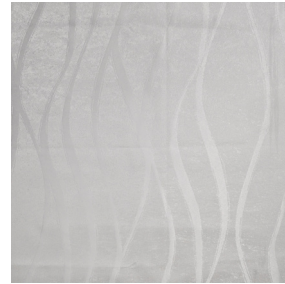
SNOW



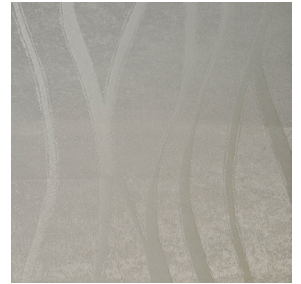
PEARL



IVORY



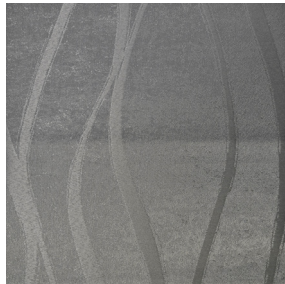
CAMELLIA



ANTIQUE



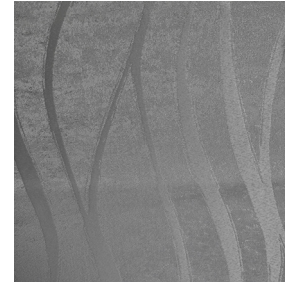
MUSHROOM



STONE



SILVER



PEWTER



CHARCOAL



SPRAY



CELADON