

NISHI

RE-ESTABLISHED 2014

**FOUR FAMILIES**

*blind fabric craftsmanship*



DESIGNED IN NEW ZEALAND & AUSTRALIA  
MADE ACROSS THE GLOBE



## Fabric Specifications

# NISHI

8 COLOURS	Snow, Chalk, Linen, Ash, Stone, Cloud, Silver, Charcoal
FABRIC TYPE	blockout blind fabric
COMPOSITION	100% Polyester with acrylic foam coating
WIDTH	300cm
OPACITY	Blockout complies to AS 2663.3:1999
PATTERN REPEAT	Nil
WEIGHT	479gsm +/- 10%
THICKNESS	0.77mm +/- 10%
ROLL SIZE	25m
USE	roller, roman and panel blinds
COUNTRY OF ORIGIN	NON EU

### TEST RESULTS

TESTED TO AS/NZS 1530.2	N
TESTED TO AS/NZS 1530.3	Y
IGNITABILITY INDEX	15 (range 0-20)
SPREAD OF FLAME INDEX	9 (range 0-10)
HEAT EVOLVED INDEX	7 (range 0-10)
SMOKE DEVELOPED INDEX	6 (range 0-10)
MARTINDALE	n/a
COLOURFASTNESS TO LIGHT	6 using blue scales AS2001.4.21-2006



Complies with Building Code of Australia requirements for Class 2 to 9(a) buildings

### CARE INSTRUCTIONS

Cleaning your blind fabric is essential, not only to remove surface dust and stains, but it will also increase the longevity of your blinds. Use a feather duster, or a vacuum set on low with an appropriate attachment. Always exercise caution when spot cleaning. Use a clean, lint-free cloth or sponge and dip it in warm water. Dry gently with a clean towel. Always make sure to test any cleaning product on a small, discreet section of the fabric. Chemicals will permanently damage your fabric.



**PVC  
FREE**



**LEAD  
FREE**



**100%  
BLOCKOUT**



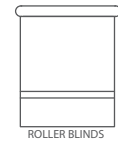
**5 YEAR  
WARRANTY**



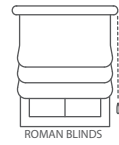
**FIRE RETARDANT  
TESTED**

Guarantee: 5 Years in accordance with our fabric type and care instructions

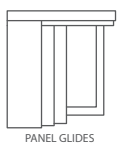




ROLLER BLINDS



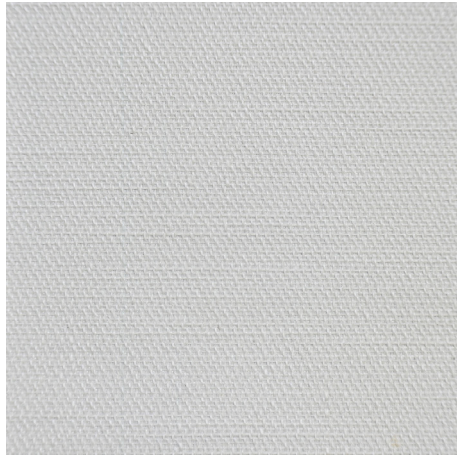
ROMAN BLINDS



PANEL GLIDES

# NISHI

AVAILABLE IN 8 COLOURS



SNOW



CHALK



LINEN



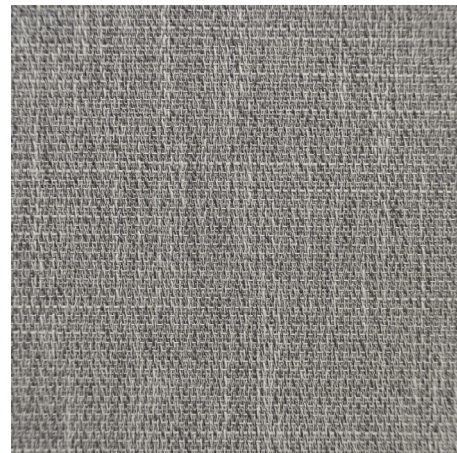
ASH



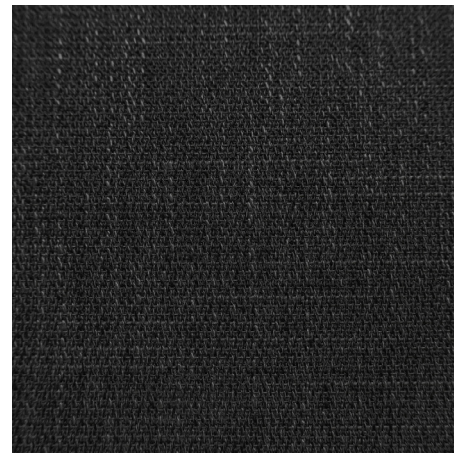
STONE



CLOUD



SILVER



CHARCOAL

**basford**brands  
basfordbrands.com