

BOND

RE-ESTABLISHED 2014

FOUR FAMILIES

blind fabric craftsmanship



DESIGNED IN NEW ZEALAND & AUSTRALIA
MADE ACROSS THE GLOBE



Fabric Specifications

BOND

8 COLOURS	Ice, Chalk, Linen, Taupe, Cloud, Concrete, Granite, Charcoal
FABRIC TYPE	blockout blind fabric
COMPOSITION	100% Polyester, bonded
WIDTH	300cm, 127mm & 89mm
OPACITY	Blockout complies to AS 2663.3:1999
PATTERN REPEAT	Nil
WEIGHT	Light Colours 410gsm +/- 20gsm, Medium & Dark Colours 320gsm +/-20gsm
THICKNESS	Light Colours 0.65mm +/-10% Medium & Dark Colours 0.6mm+/-10%
ROLL SIZE	300cm 25-30mm 127mm & 89mm 100m
USE	roller, roman, panel and vertical blinds
COUNTRY OF ORIGIN	NON EU

TEST RESULTS

TESTED TO AS/NZS 1530.2	N
TESTED TO AS/NZS 1530.3	Y
IGNITABILITY INDEX	13 (range 0-20)
SPREAD OF FLAME INDEX	9 (range 0-10)
HEAT EVOLVED INDEX	5 (range 0-10)
SMOKE DEVELOPED INDEX	7 (range 0-10)
MARTINDALE	n/a
COLOURFASTNESS TO LIGHT	6 using blue scales AS2001.4.21-2006



Complies with Building Code of Australia requirements for Class 2 to 9(a) buildings

CARE INSTRUCTIONS

Cleaning your blind fabric is essential, not only to remove surface dust and stains, but it will also increase the longevity of your blinds. Use a feather duster, or a vacuum set on low with an appropriate attachment. Always exercise caution when spot cleaning. Use a clean, lint-free cloth or sponge and dip it in warm water. Dry gently with a clean towel. Always make sure to test any cleaning product on a small, discreet section of the fabric. Chemicals will permanently damage your fabric.



**PVC
FREE**



**LEAD
FREE**



**100%
BLOCKOUT**



**5 YEAR
WARRANTY**

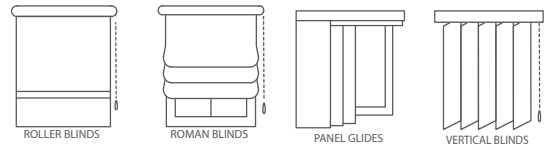


**FIRE RETARDANT
TESTED**

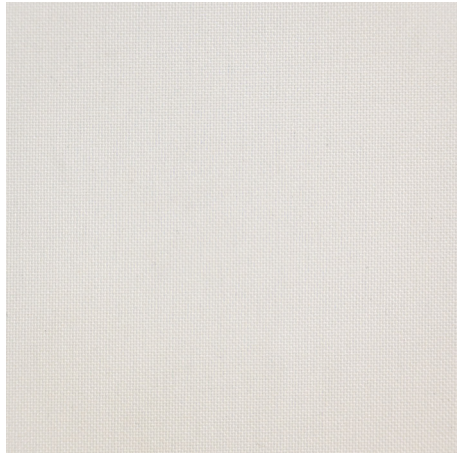
Guarantee: 5 Years in accordance with our fabric type and care instructions



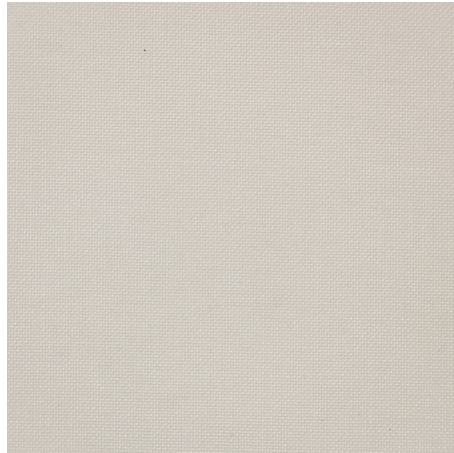
BOND



AVAILABLE IN 8 COLOURS



ICE



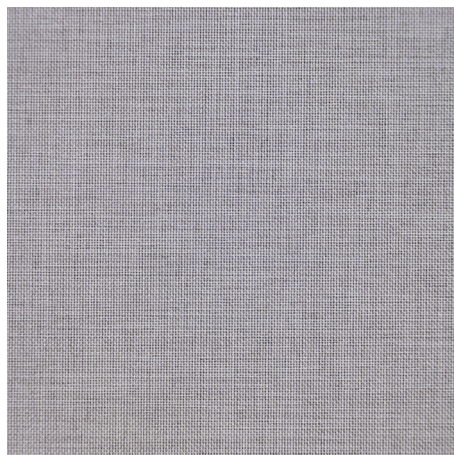
CHALK



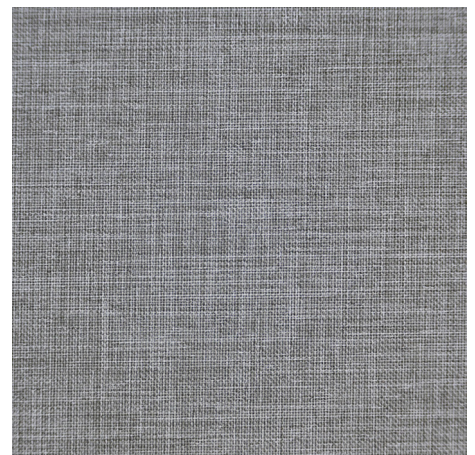
LINEN



TAUPE



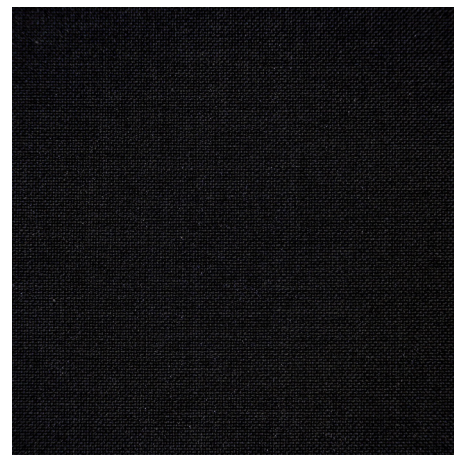
CLOUD



CONCRETE



GRANITE



CHARCOAL